

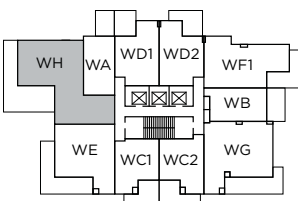
2 BEDROOM + DEN, 2 BATH
INTERIOR 1,121 SQ. FT.
EXTERIOR 446-487 SQ. FT.

TOTAL 1,567-1,608 SQ. FT.

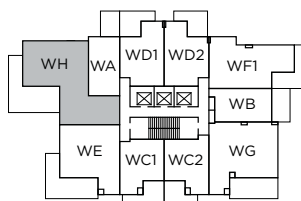
ONE
WATER
STREET



LEVELS 6, 10



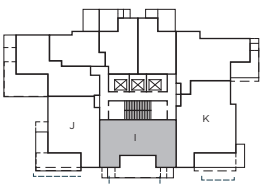
LEVELS 7-9



In our continuing effort to improve and maintain the high standard of One Water Street development, the developer reserves the right to modify or change plans, specifications, features and prices without notice. Materials may be substituted with equivalent or better at the developer's sole discretion. All dimensions and sizes are approximate and are based on architectural measurements. As reverse, mirrored and/or flipped plans occur throughout the development please see architectural plans if material to your decision to purchase. Renderings are an artist's conception and are intended as a general reference only. Please see disclosure statement for specific offering details. E.&O.E.

I

WATER
STREET

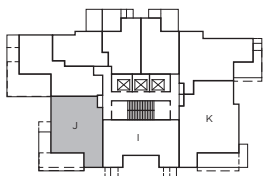
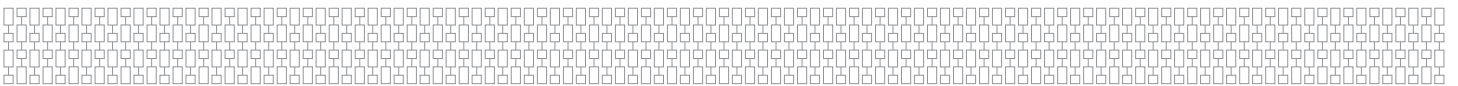
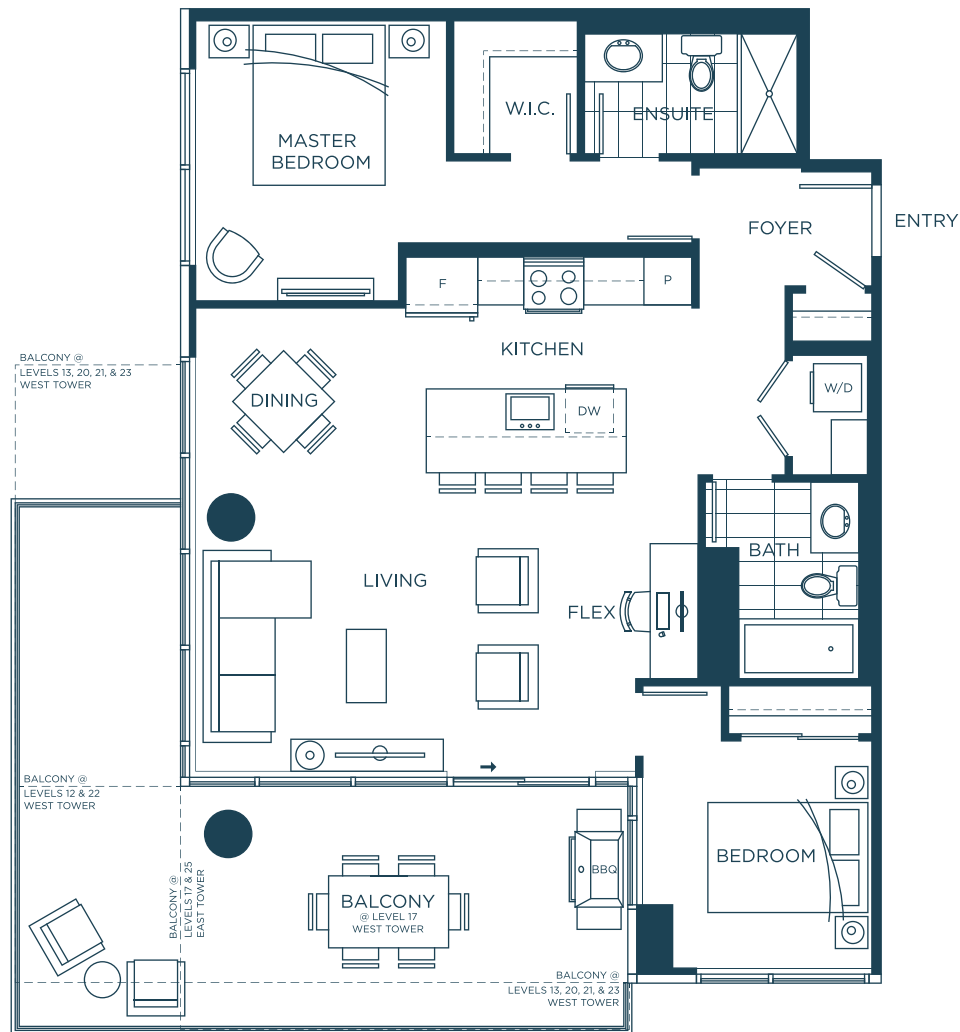


In our continuing effort to improve and maintain the high standard of One Water Street development, the developer reserves the right to modify or change plans, specifications, features and prices without notice. Materials may be substituted with equivalent or better at the developer's sole discretion. All dimensions and sizes are approximate and are based on architectural measurements. As reverse, mirrored and/or flipped plans occur throughout the development please see architectural plans if material to your decision to purchase. Renderings are an artist's conception and are intended as a general reference only. Please see disclosure statement for specific offering details. E.&O.E.

J

2 BEDROOM + FLEX, 2 BATH
 INTERIOR 975 SQ. FT.
 EXTERIOR 189-353 SQ. FT.
 TOTAL 1,164-1,328 SQ. FT.

ONE

WATER
STREET

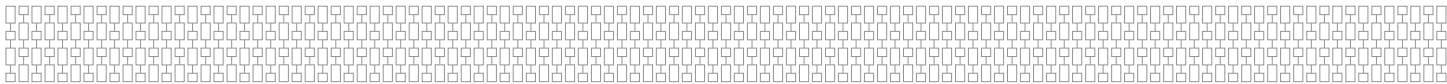
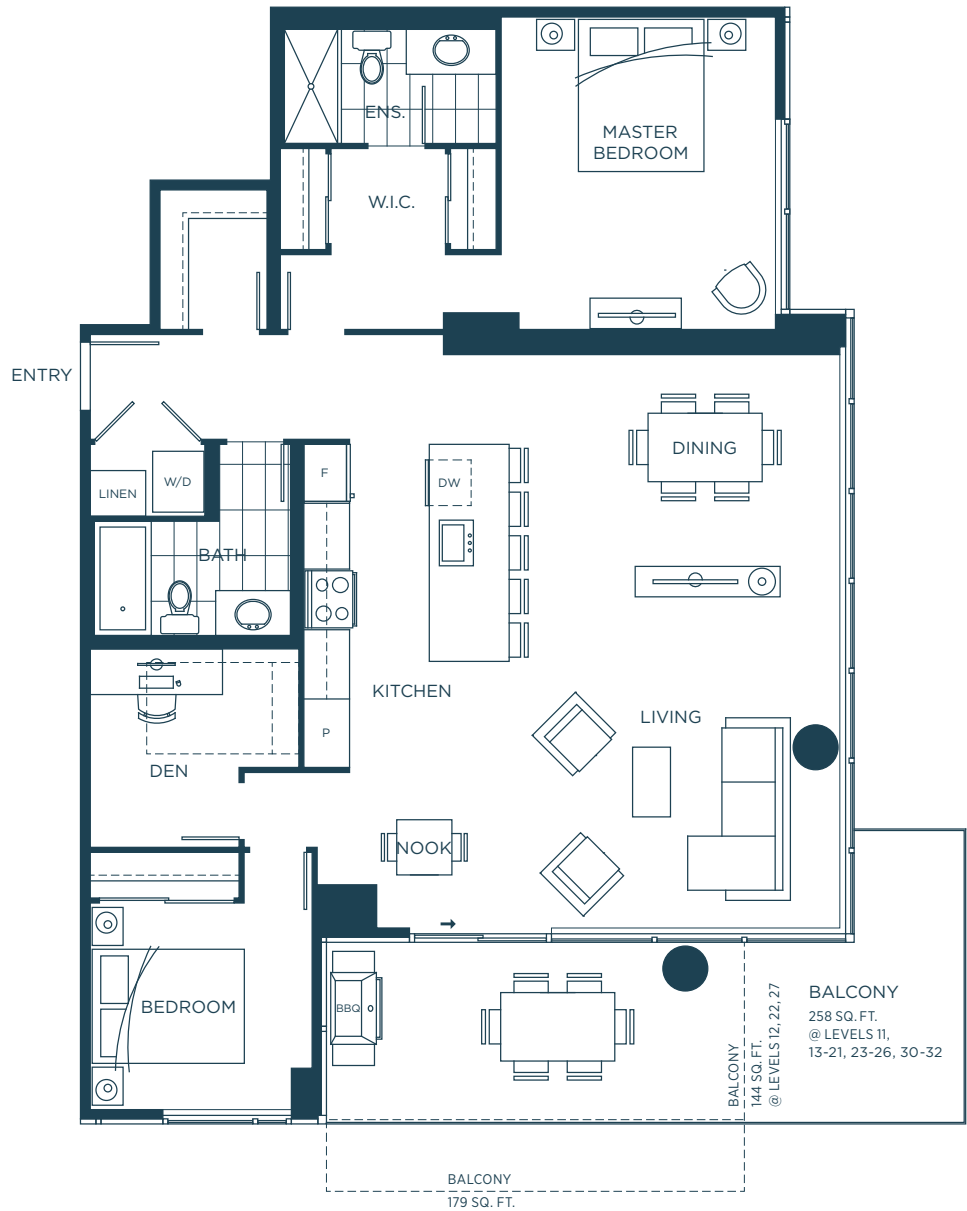
In our continuing effort to improve and maintain the high standard of One Water Street development, the developer reserves the right to modify or change plans, specifications, features and prices without notice. Materials may be substituted with equivalent or better at the developer's sole discretion. All dimensions and sizes are approximate and are based on architectural measurements. As reverse, mirrored and/or flipped plans occur throughout the development please see architectural plans if material to your decision to purchase. Renderings are an artist's conception and are intended as a general reference only. Please see disclosure statement for specific offering details. E.&O.E.



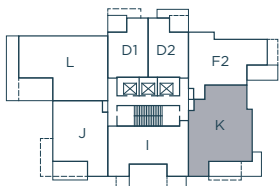
2 BEDROOM + DEN, 2 BATH
INTERIOR 1,311 SQ. FT.
EXTERIOR 144-258 SQ. FT.

TOTAL 1,455-1,569 SQ. FT.

ONE
WATER
STREET



LEVELS 11-32

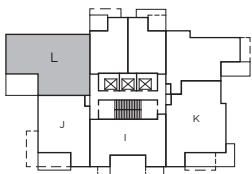
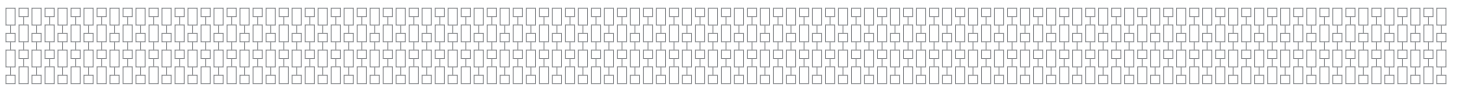
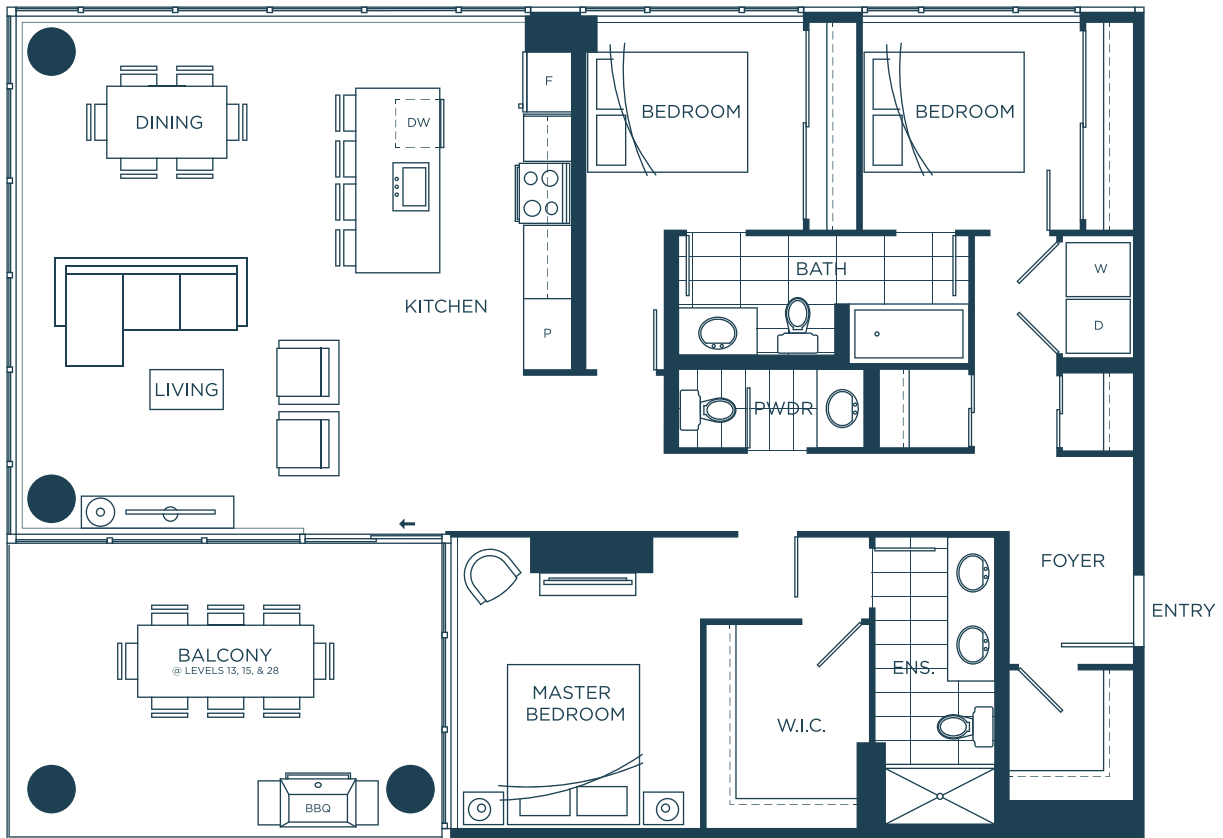


In our continuing effort to improve and maintain the high standard of One Water Street development, the developer reserves the right to modify or change plans, specifications, features and prices without notice. Materials may be substituted with equivalent or better at the developer's sole discretion. All dimensions and sizes are approximate and are based on architectural measurements. As reverse, mirrored and/or flipped plans occur throughout the development please see architectural plans if material to your decision to purchase. Renderings are an artist's conception and are intended as a general reference only. Please see disclosure statement for specific offering details. E.&O.E.

3 BEDROOM, 2.5 BATH
 INTERIOR 1,373 SQ. FT.
 EXTERIOR 227-462 SQ. FT.
 TOTAL 1,660-1,835 SQ. FT.

ONE

WATER
STREET

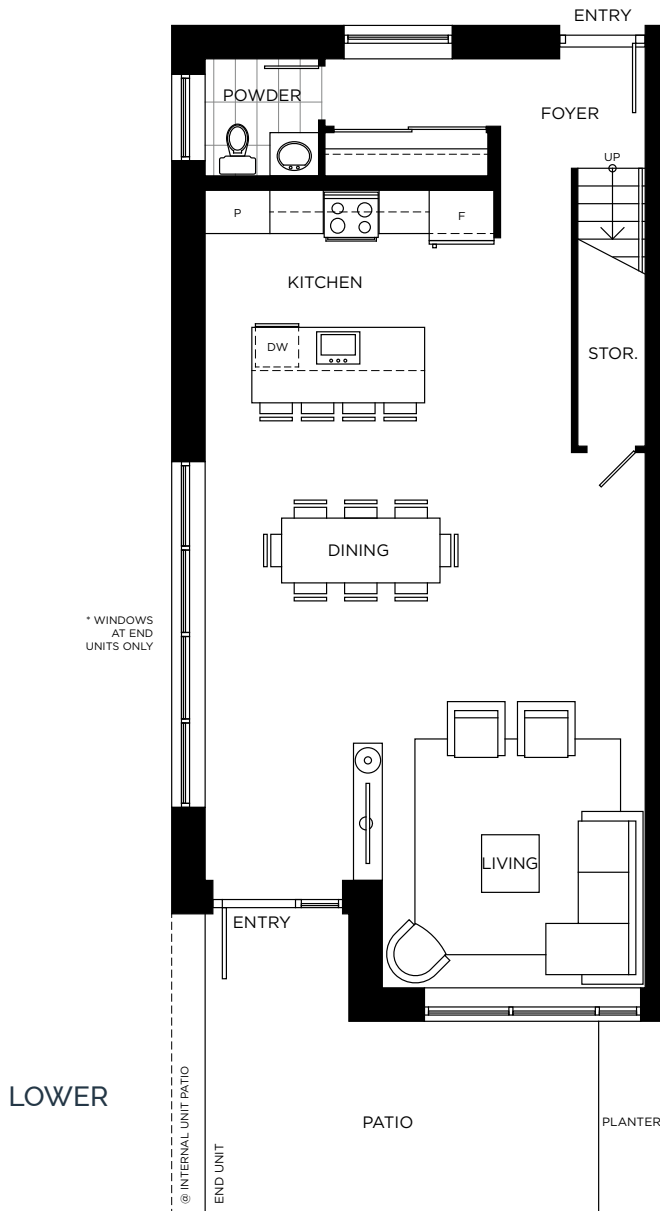


In our continuing effort to improve and maintain the high standard of One Water Street development, the developer reserves the right to modify or change plans, specifications, features and prices without notice. Materials may be substituted with equivalent or better at the developer's sole discretion. All dimensions and sizes are approximate and are based on architectural measurements. As reverse, mirrored and/or flipped plans occur throughout the development please see architectural plans if material to your decision to purchase. Renderings are an artist's conception and are intended as a general reference only. Please see disclosure statement for specific offering details. E.&O.E.

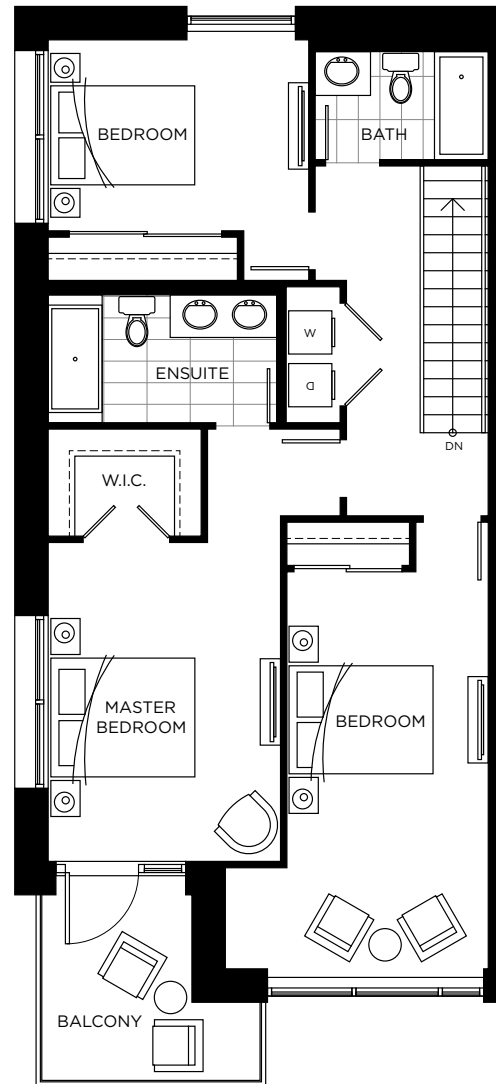
TH-A

3 BEDROOM, 2.5 BATH
 INTERIOR 1,823-1,857 SQ. FT.
 EXTERIOR 294-313 SQ. FT.
 TOTAL 2,117-2,170 SQ. FT.

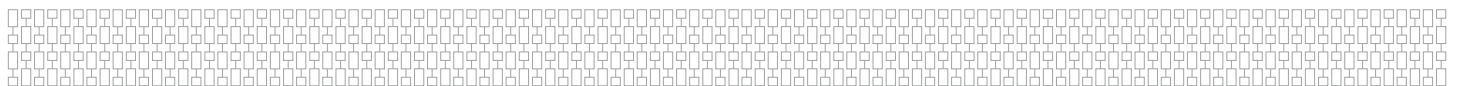
ONE
 WATER
 STREET



LOWER

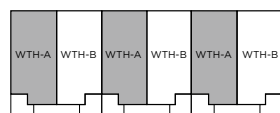
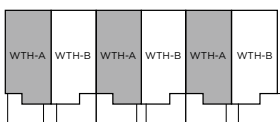


UPPER



LEVEL 4 (LOWER)

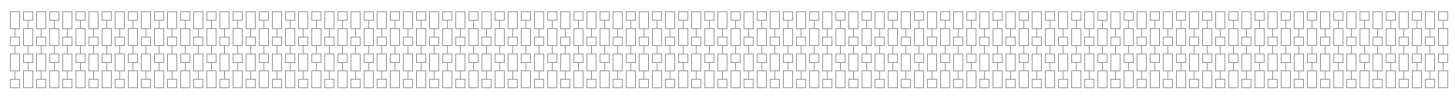
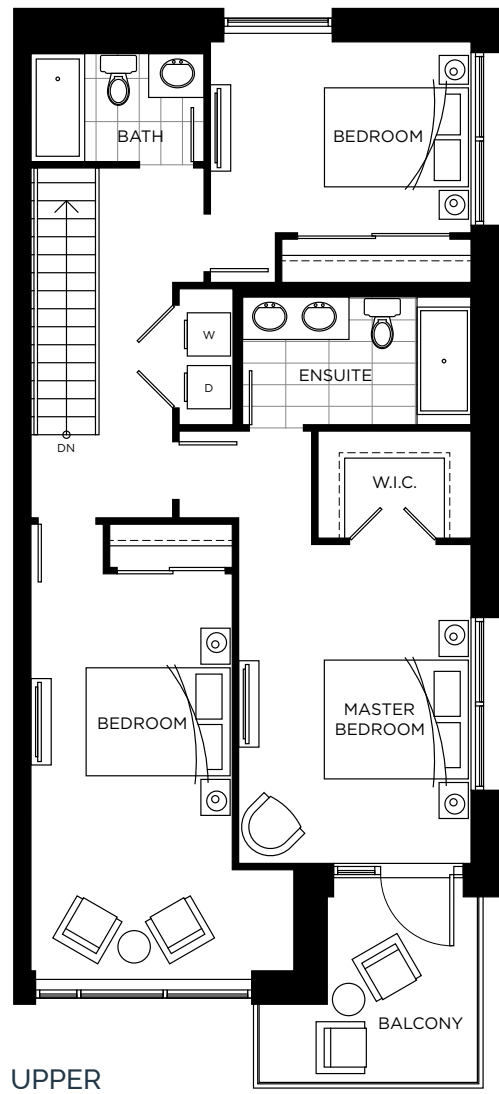
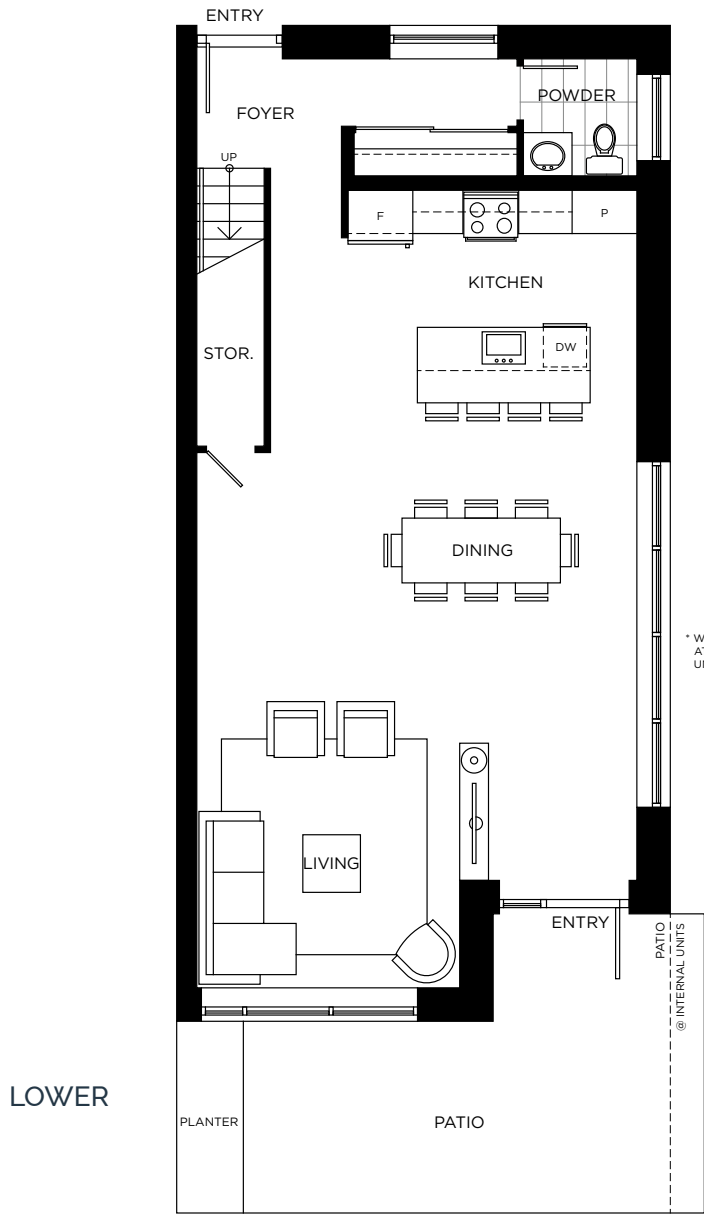
LEVEL 5 (UPPER)



TH-B

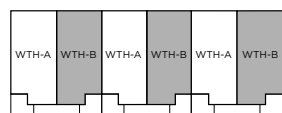
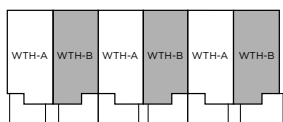
3 BEDROOM, 2.5 BATH
 INTERIOR 1,823-1,857 SQ. FT.
 EXTERIOR 308-331 SQ. FT.
 TOTAL 2,131-2,188 SQ. FT.

ONE
 WATER
 STREET



LEVEL 4 (LOWER)

LEVEL 5 (UPPER)



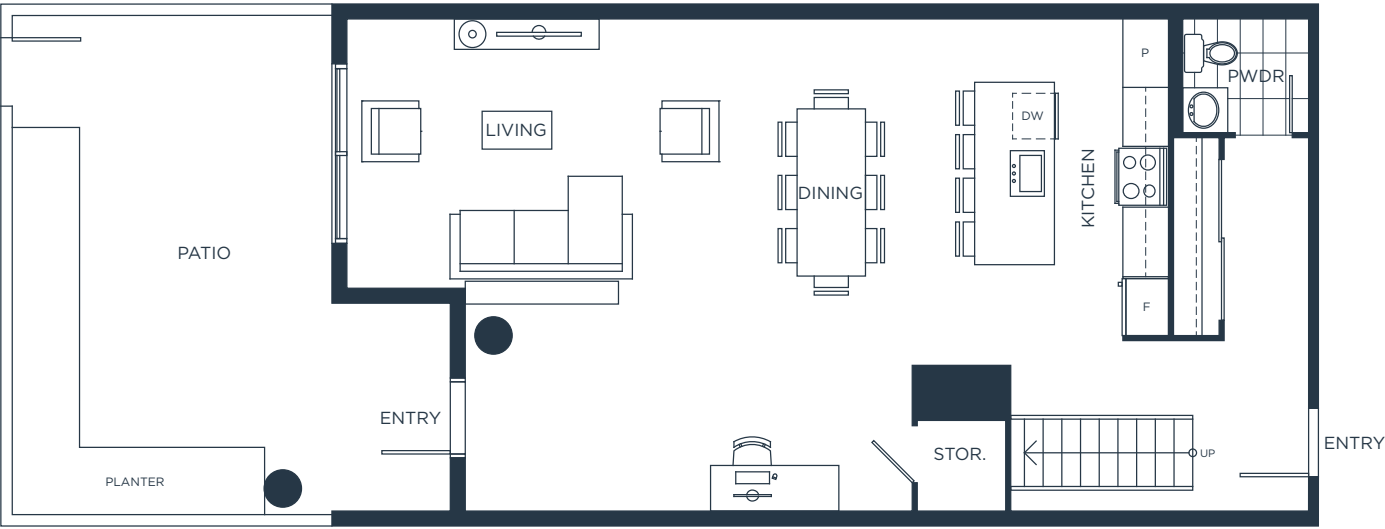
In our continuing effort to improve and maintain the high standard of One Water Street development, the developer reserves the right to modify or change plans, specifications, features and prices without notice. Materials may be substituted with equivalent or better at the developer's sole discretion. All dimensions and sizes are approximate and are based on architectural measurements. As reverse, mirrored and/or flipped plans occur throughout the development please see architectural plans if material to your decision to purchase. Renderings are an artist's conception and are intended as a general reference only. Please see disclosure statement for specific offering details. E&O.E.

TH1

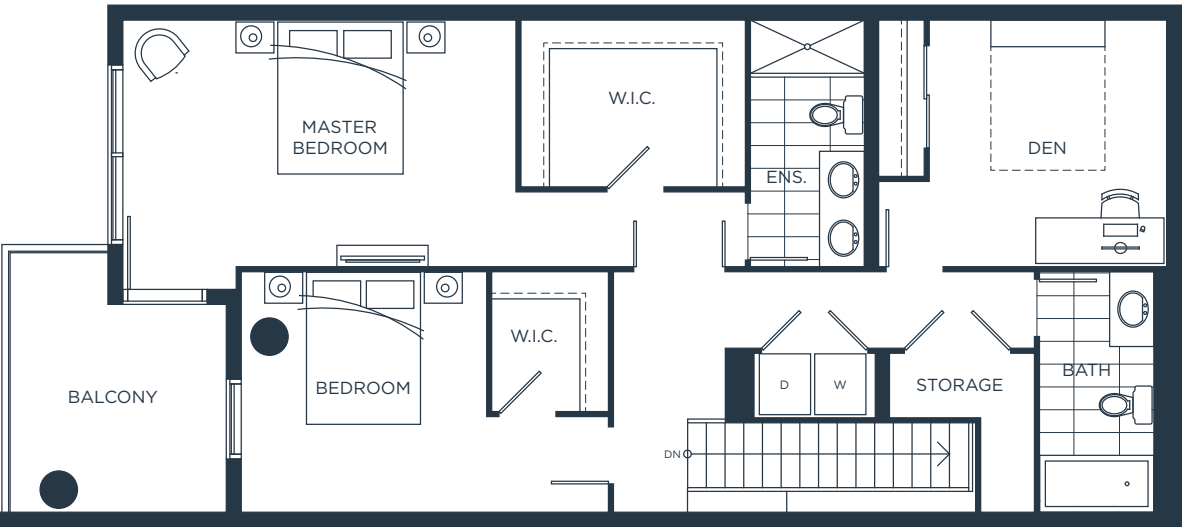
TOWNHOME 1
2 BEDROOM + DEN, 2.5 BATH
 LOWER 946 SQ. FT. UPPER 993 SQ. FT.
 EXTERIOR 482 SQ. FT.

TOTAL 2,421 SQ. FT.

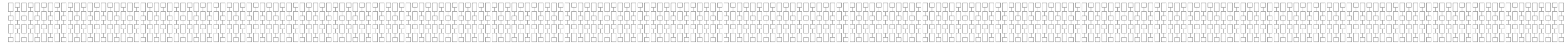
ONE
 WATER
 STREET



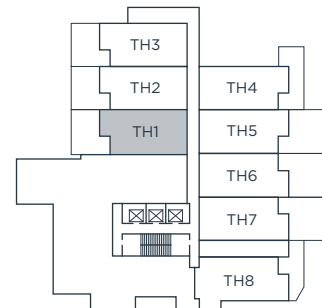
LOWER



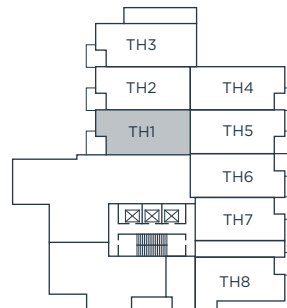
UPPER



EAST TOWER



LEVEL 4



LEVEL 5



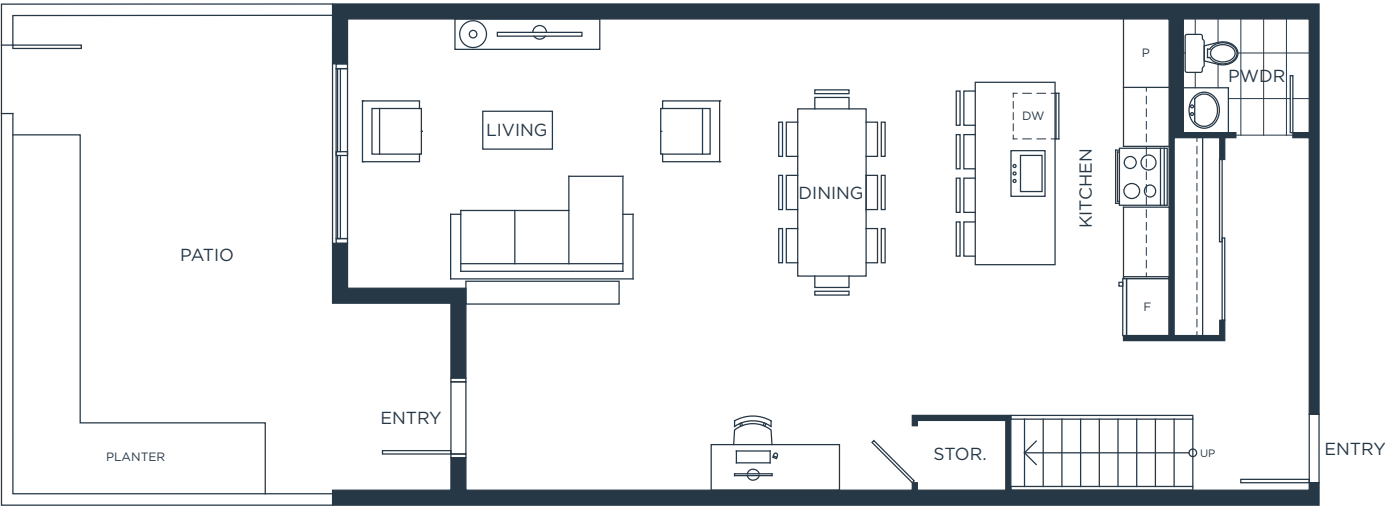
In our continuing effort to improve and maintain the high standard of One Water Street development, the developer reserves the right to modify or change plans, specifications, features and prices without notice. Materials may be substituted with equivalent or better at the developer's sole discretion. All dimensions and sizes are approximate and are based on architectural measurements. As reverse, mirrored and/or flipped plans occur throughout the development please see architectural plans if material to your decision to purchase. Renderings are an artist's conception and are intended as a general reference only. This is not an offering for sale which can only be made with a disclosure statement. E.&O.E.

TH2

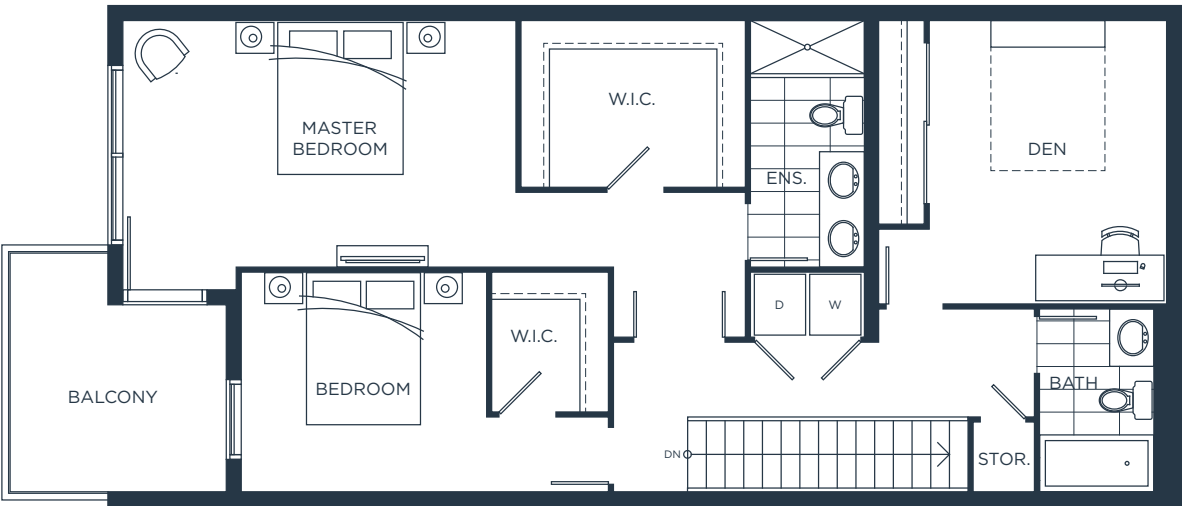
TOWNHOME 2
2 BEDROOM + DEN, 2.5 BATH
LOWER 885 SQ. FT. UPPER 955 SQ. FT.
EXTERIOR 456 SQ. FT.

TOTAL 2,296 SQ. FT.

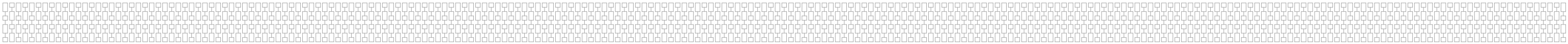
ONE
WATER
STREET



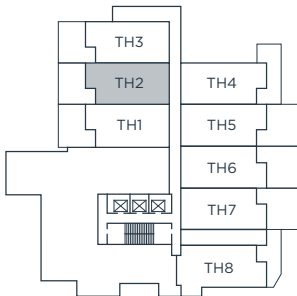
LOWER



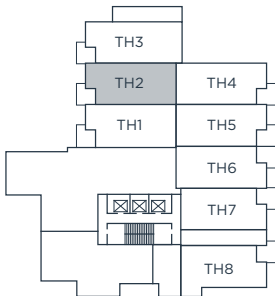
UPPER



EAST TOWER



LEVEL 4



LEVEL 5



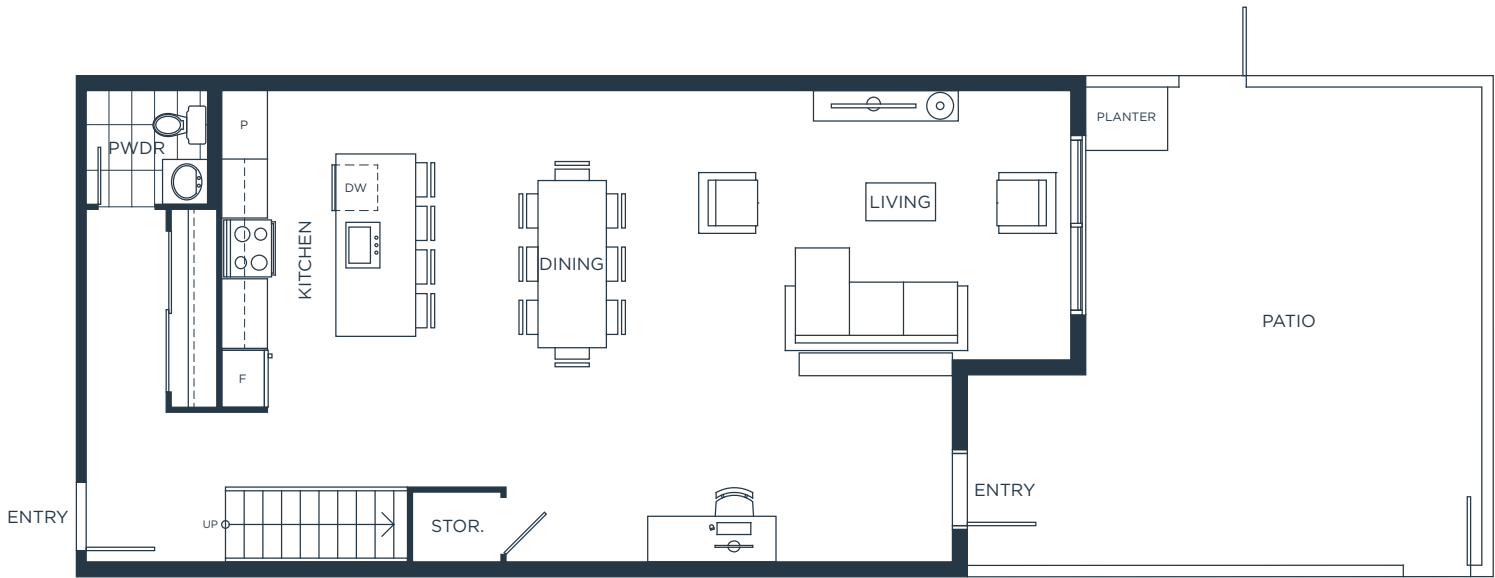
In our continuing effort to improve and maintain the high standard of One Water Street development, the developer reserves the right to modify or change plans, specifications, features and prices without notice. Materials may be substituted with equivalent or better at the developer's sole discretion. All dimensions and sizes are approximate and are based on architectural measurements. As reverse, mirrored and/or flipped plans occur throughout the development please see architectural plans if material to your decision to purchase. Renderings are an artist's conception and are intended as a general reference only. This is not an offering for sale which can only be made with a disclosure statement. E.&O.E.

TH5

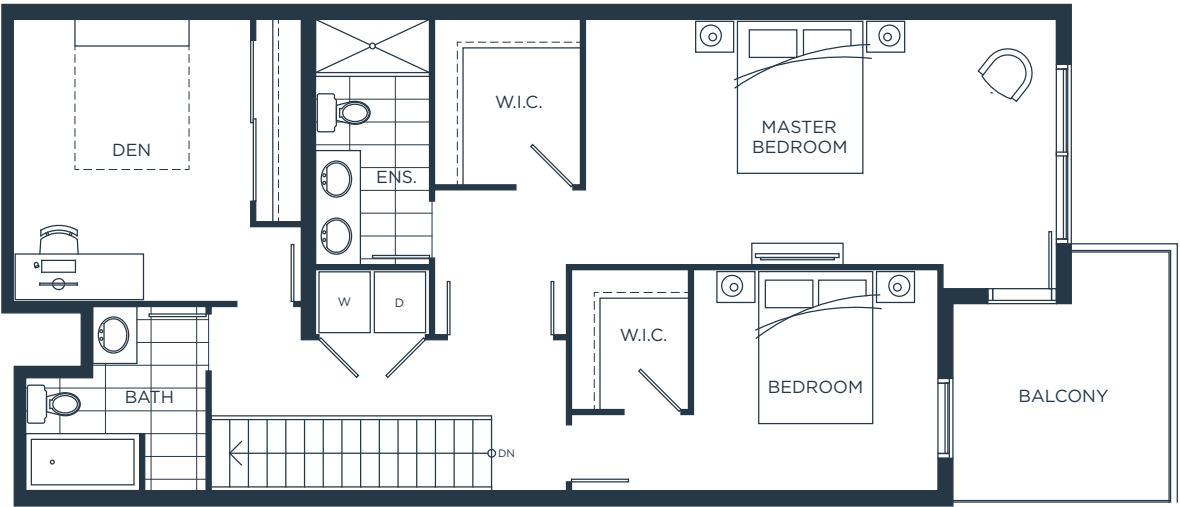
TOWNHOME 5
2 BEDROOM + DEN, 2.5 BATH
LOWER 898 SQ. FT. UPPER 954 SQ. FT.
EXTERIOR 535 SQ. FT.

TOTAL 2,387 SQ. FT.

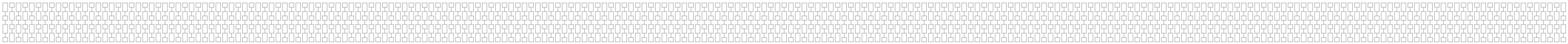
ONE
WATER
STREET



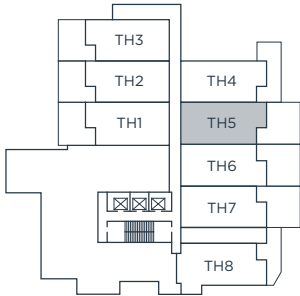
LOWER



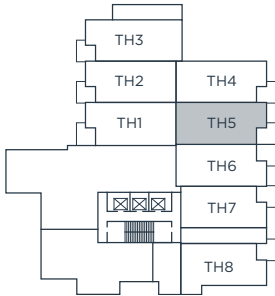
UPPER



EAST TOWER



LEVEL 4



LEVEL 5



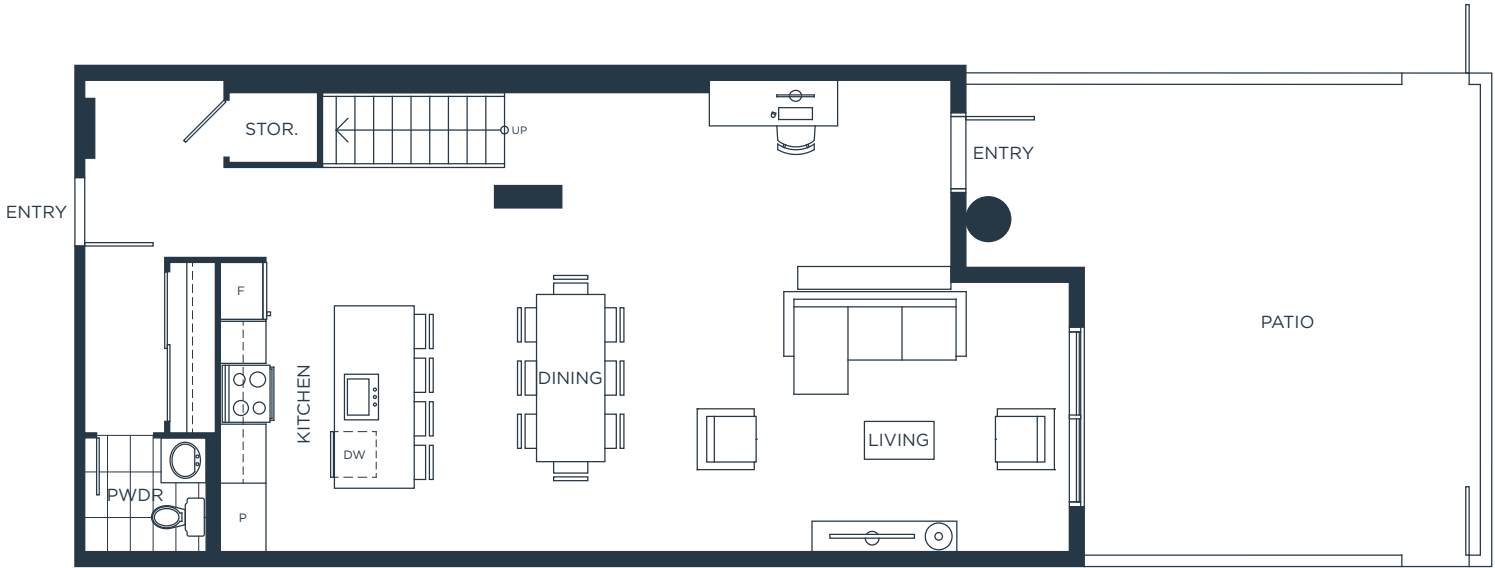
In our continuing effort to improve and maintain the high standard of One Water Street development, the developer reserves the right to modify or change plans, specifications, features and prices without notice. Materials may be substituted with equivalent or better at the developer's sole discretion. All dimensions and sizes are approximate and are based on architectural measurements. As reverse, mirrored and/or flipped plans occur throughout the development please see architectural plans if material to your decision to purchase. Renderings are an artist's conception and are intended as a general reference only. This is not an offering for sale which can only be made with a disclosure statement. E.&O.E.

TH6

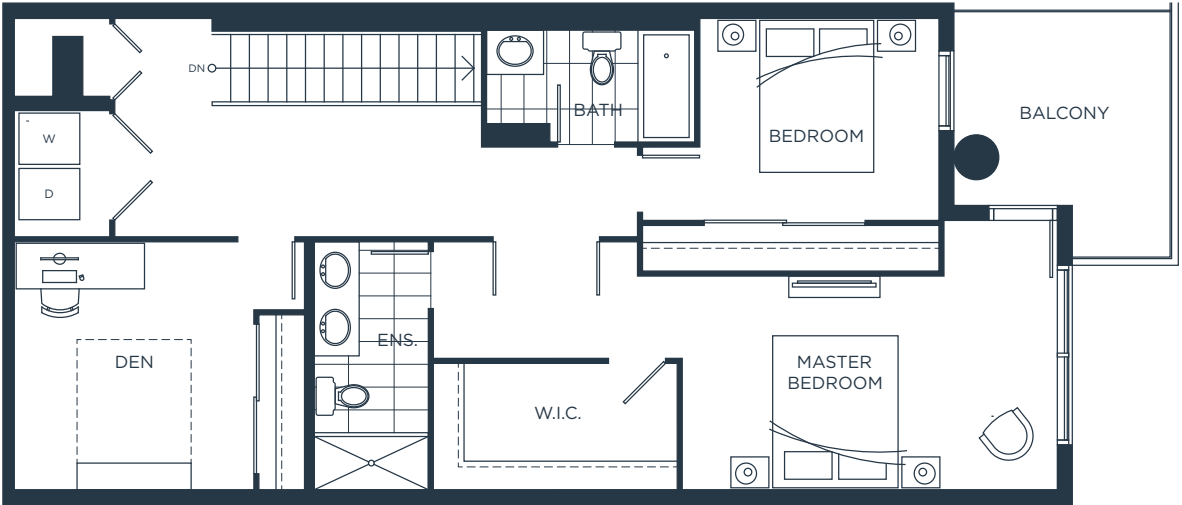
TOWNHOME 6
 2 BEDROOM + DEN, 2.5 BATH
 LOWER 898 SQ. FT. UPPER 954 SQ. FT.
 EXTERIOR 535 SQ. FT.

TOTAL 2,387 SQ. FT.

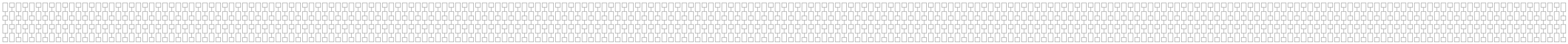
ONE
 WATER
 STREET



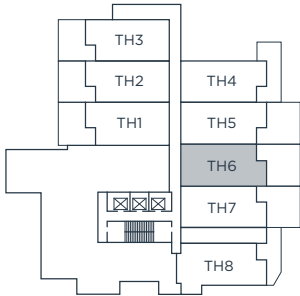
LOWER



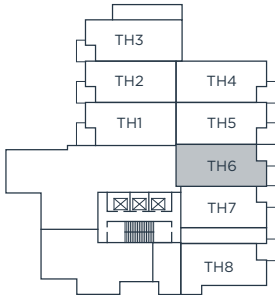
UPPER



EAST TOWER



LEVEL 4



LEVEL 5



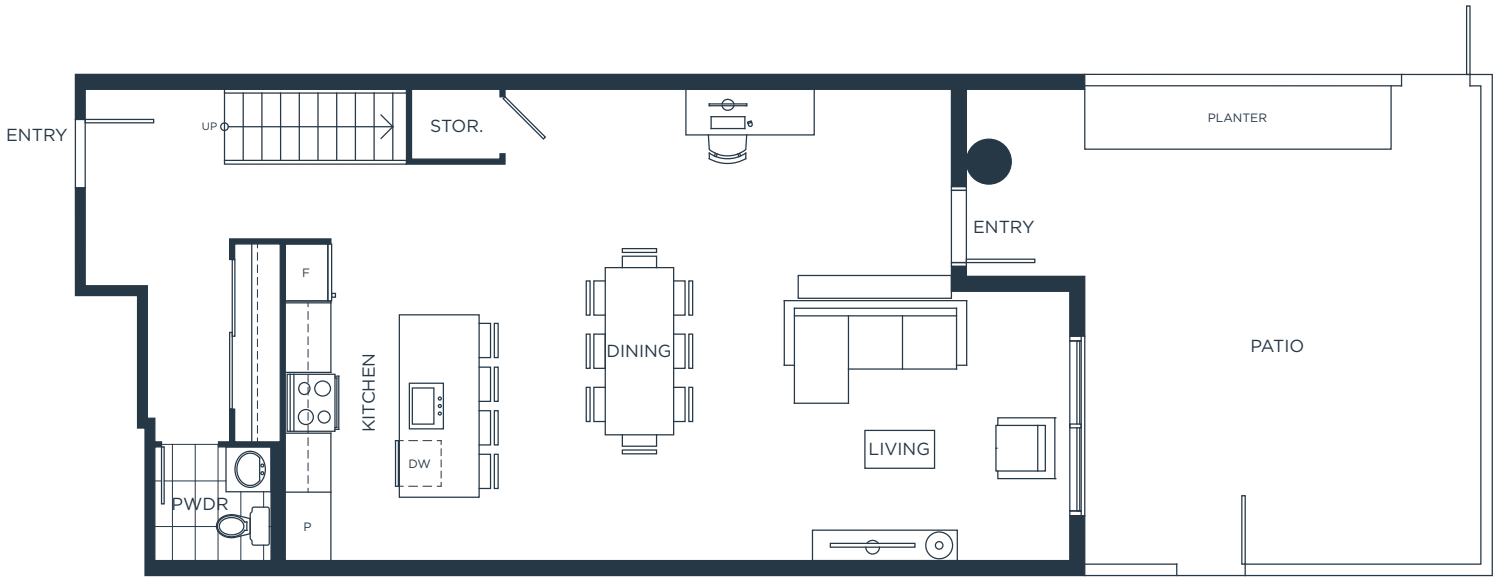
In our continuing effort to improve and maintain the high standard of One Water Street development, the developer reserves the right to modify or change plans, specifications, features and prices without notice. Materials may be substituted with equivalent or better at the developer's sole discretion. All dimensions and sizes are approximate and are based on architectural measurements. As reverse, mirrored and/or flipped plans occur throughout the development please see architectural plans if material to your decision to purchase. Renderings are an artist's conception and are intended as a general reference only. This is not an offering for sale which can only be made with a disclosure statement. E.&O.E.

TH7

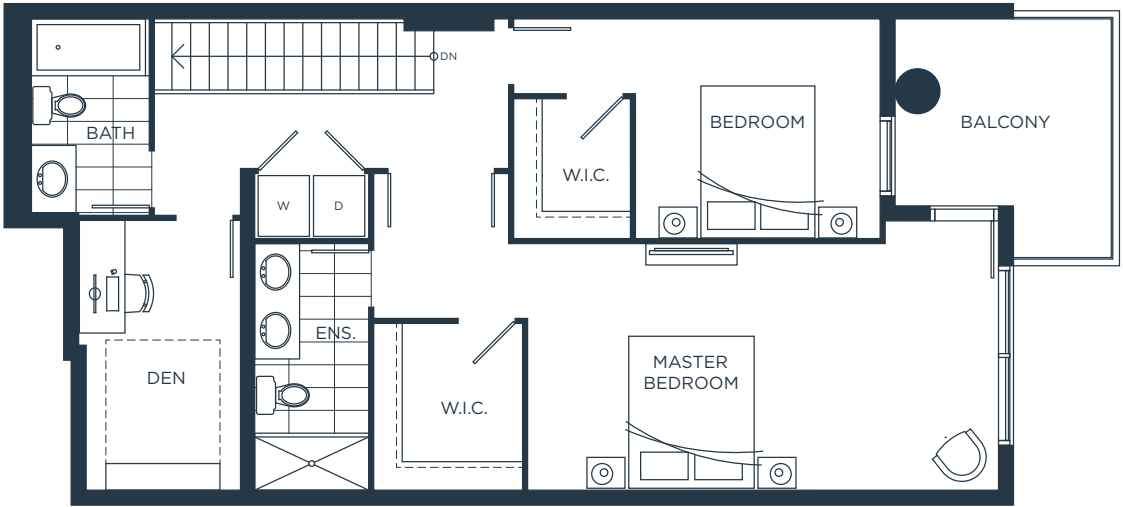
TOWNHOME 7
2 BEDROOM + DEN, 2.5 BATH
LOWER 861 SQ. FT. UPPER 859 SQ. FT.
EXTERIOR 529 SQ. FT.

TOTAL 2,249 SQ. FT.

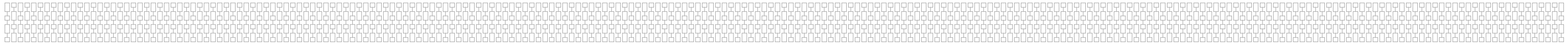
ONE
WATER
STREET



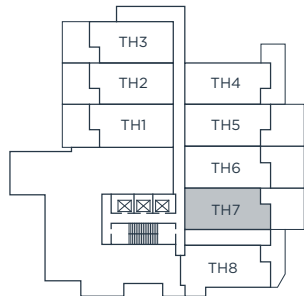
LOWER



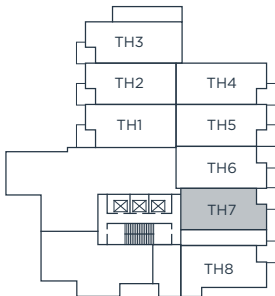
UPPER



EAST TOWER



LEVEL 4



LEVEL 5

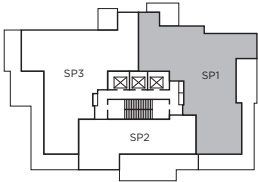
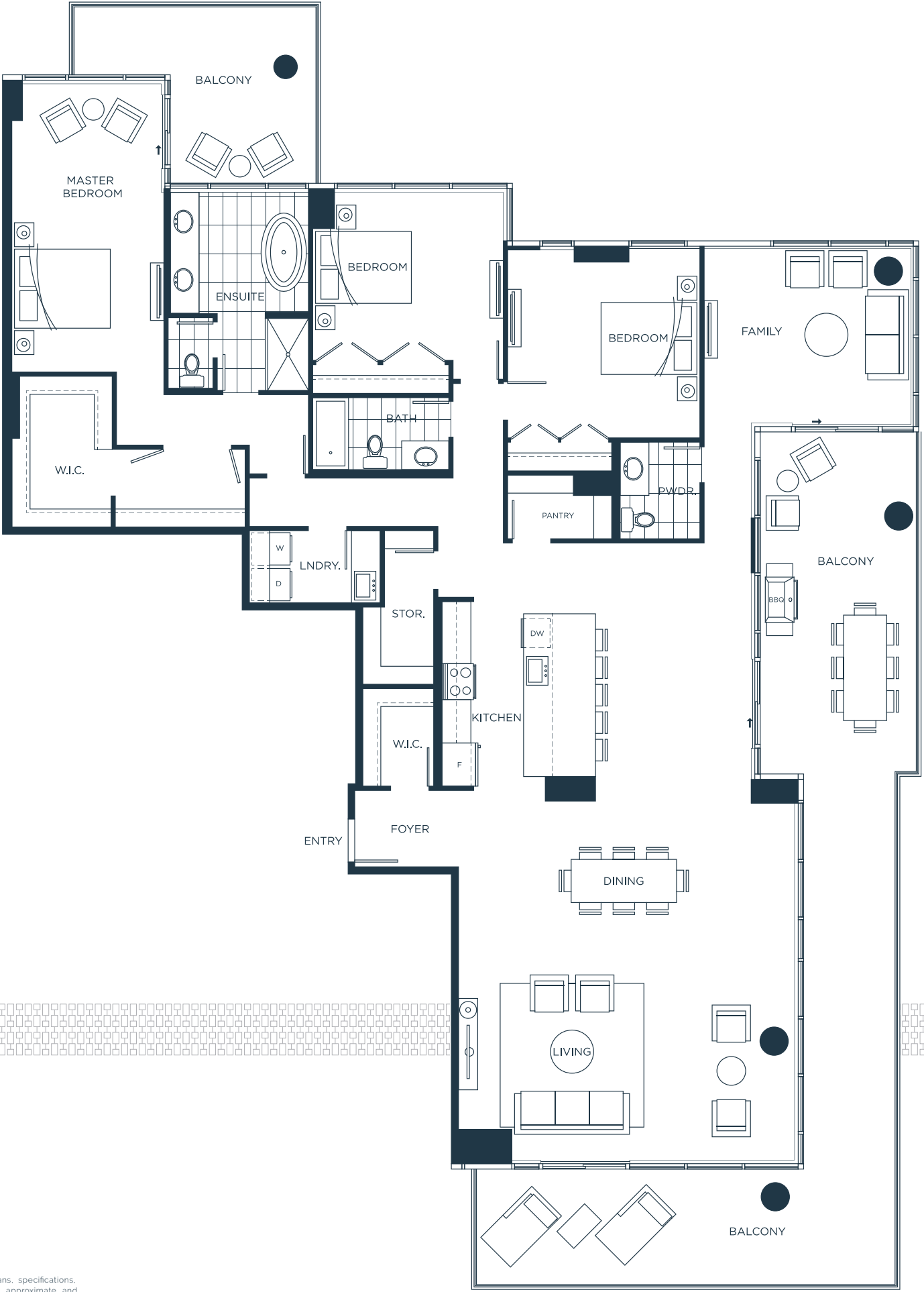


In our continuing effort to improve and maintain the high standard of One Water Street development, the developer reserves the right to modify or change plans, specifications, features and prices without notice. Materials may be substituted with equivalent or better at the developer's sole discretion. All dimensions and sizes are approximate and are based on architectural measurements. As reverse, mirrored and/or flipped plans occur throughout the development please see architectural plans if material to your decision to purchase. Renderings are an artist's conception and are intended as a general reference only. This is not an offering for sale which can only be made with a disclosure statement. E.&O.E.

SP1

SUB-PENTHOUSE 1
3 BEDROOM + FAMILY, 2.5 BATH
INTERIOR 2,617 SQ. FT.
EXTERIOR 831-884 SQ. FT.
TOTAL 3,448-3,501 SQ. FT.

ONE
WATER
STREET

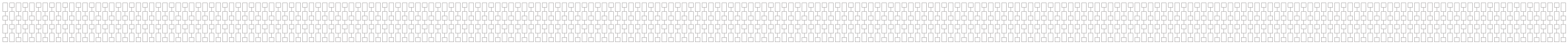
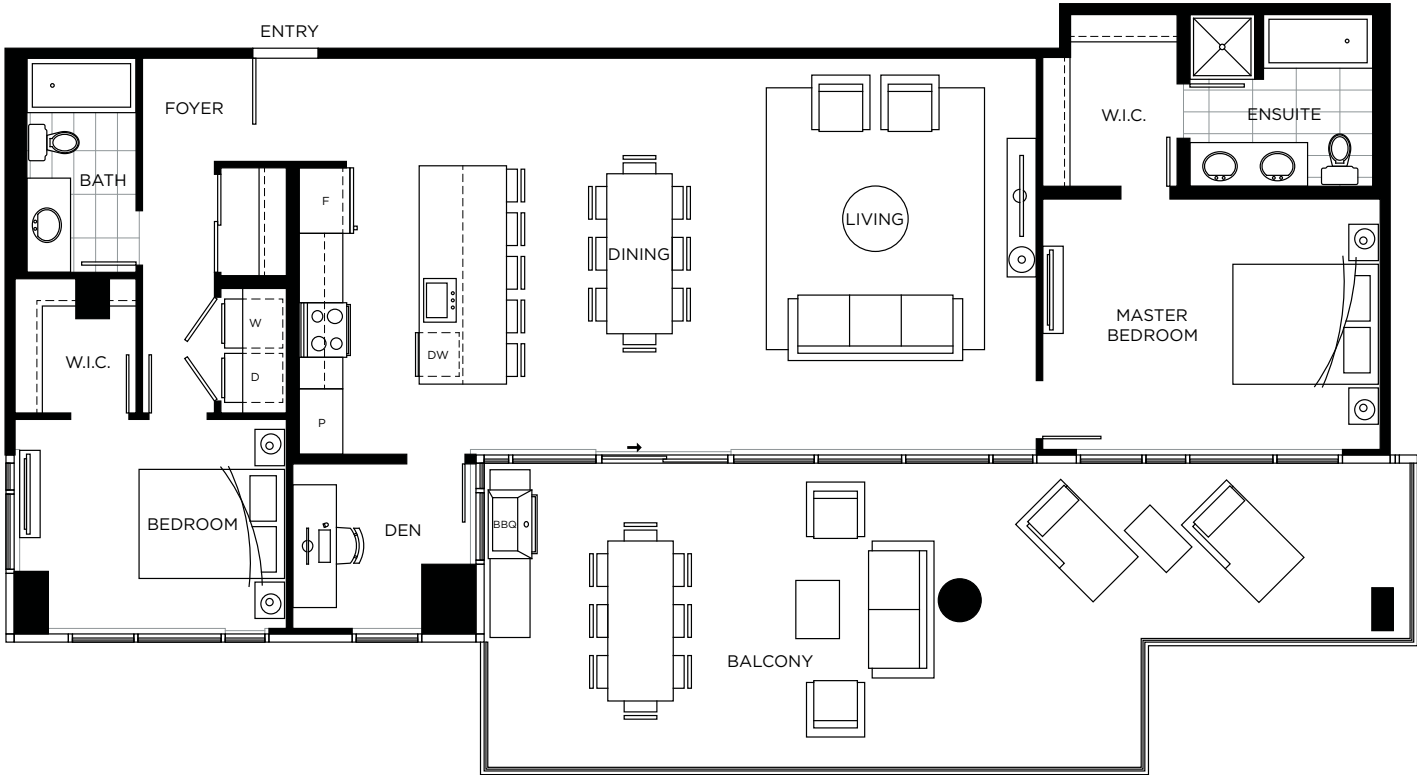


In our continuing effort to improve and maintain the high standard of One Water Street development, the developer reserves the right to modify or change plans, specifications, features and prices without notice. Materials may be substituted with equivalent or better at the developer's sole discretion. All dimensions and sizes are approximate and are based on architectural measurements. As reverse, mirrored and/or flipped plans occur throughout the development please see architectural plans if material to your decision to purchase. Renderings are an artist's conception and are intended as a general reference only. Please see disclosure statement for specific offering details. E&O.E.

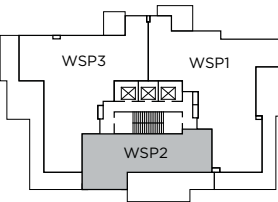
SP2

2 BEDROOM + DEN, 2 BATH
INTERIOR 1,390 SQ. FT.
EXTERIOR 541 SQ. FT.
TOTAL 1,931 SQ. FT.

ONE
WATER
STREET



LEVELS 26-28

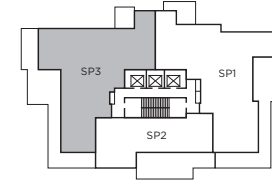
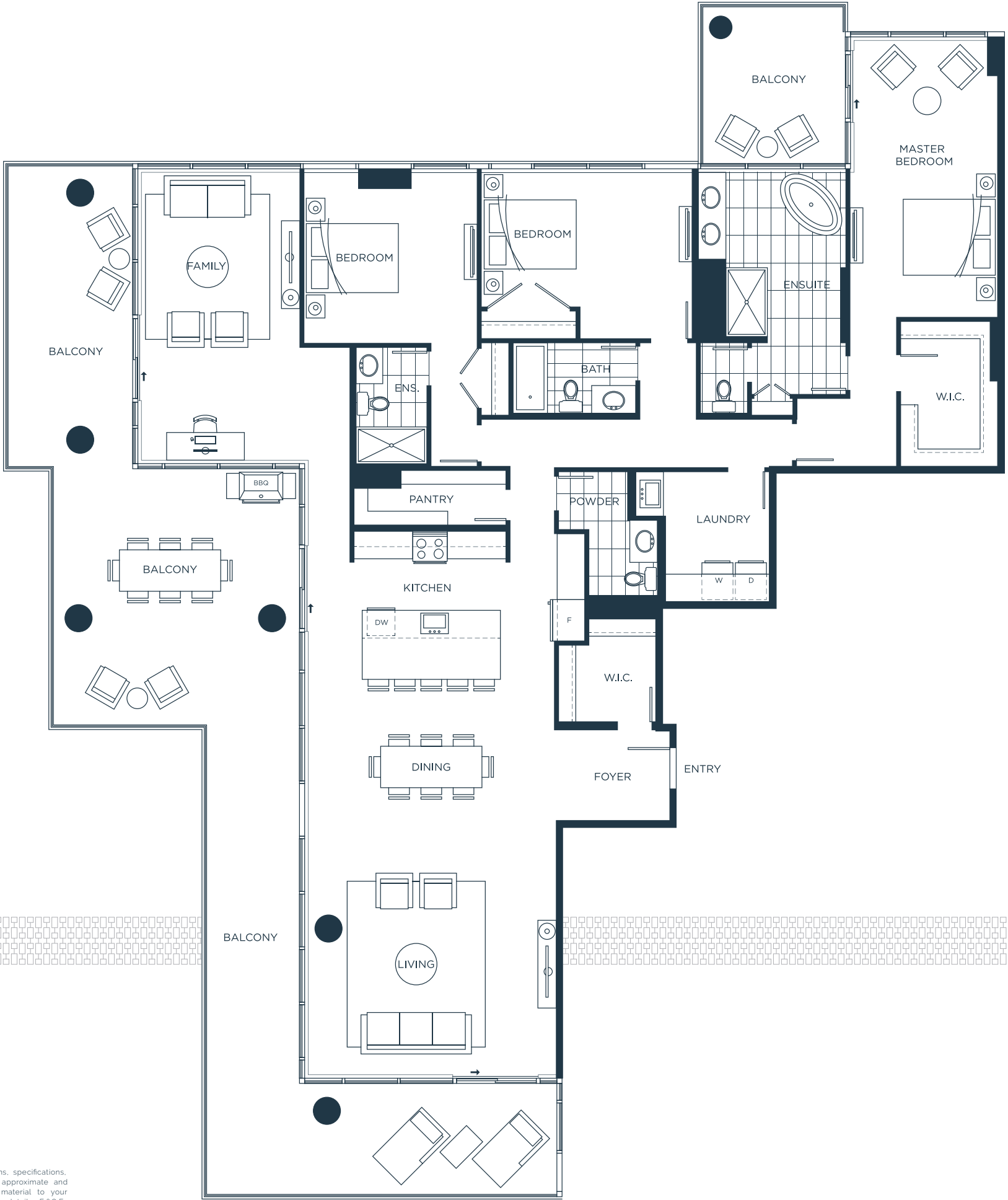


In our continuing effort to improve and maintain the high standard of One Water Street development, the developer reserves the right to modify or change plans, specifications, features and prices without notice. Materials may be substituted with equivalent or better at the developer's sole discretion. All dimensions and sizes are approximate and are based on architectural measurements. As reverse, mirrored and/or flipped plans occur throughout the development please see architectural plans if material to your decision to purchase. Renderings are an artist's conception and are intended as a general reference only. Please see disclosure statement for specific offering details. E&O.E.

SP3

SUB-PENTHOUSE 3
3 BEDROOM + FAMILY, 3.5 BATH
INTERIOR 2,580 SQ. FT.
EXTERIOR 1,020-1,086 SQ. FT.
TOTAL 3,600-3,666 SQ. FT.

ONE
WATER
STREET

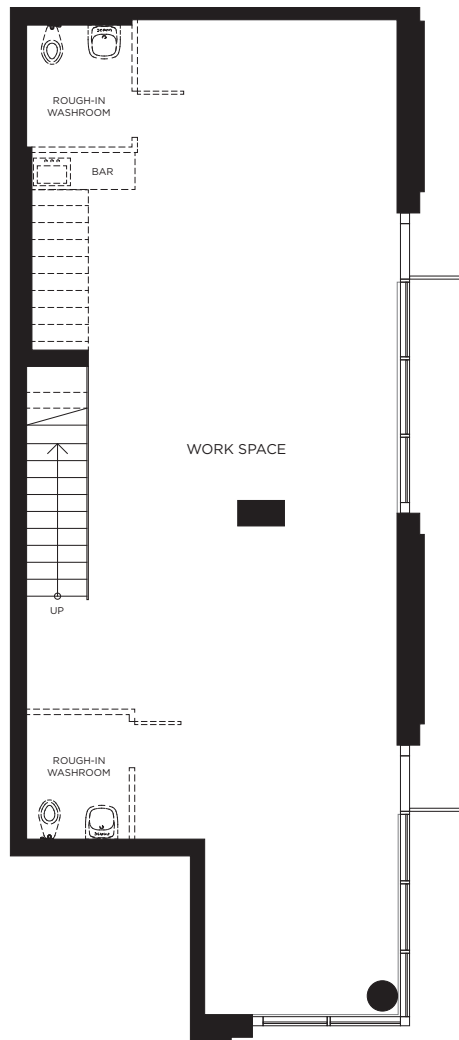


In our continuing effort to improve and maintain the high standard of One Water Street development, the developer reserves the right to modify or change plans, specifications, features and prices without notice. Materials may be substituted with equivalent or better at the developer's sole discretion. All dimensions and sizes are approximate and are based on architectural measurements. As reverse, mirrored and/or flipped plans occur throughout the development please see architectural plans if material to your decision to purchase. Renderings are an artist's conception and are intended as a general reference only. Please see disclosure statement for specific offering details. E&O.E.

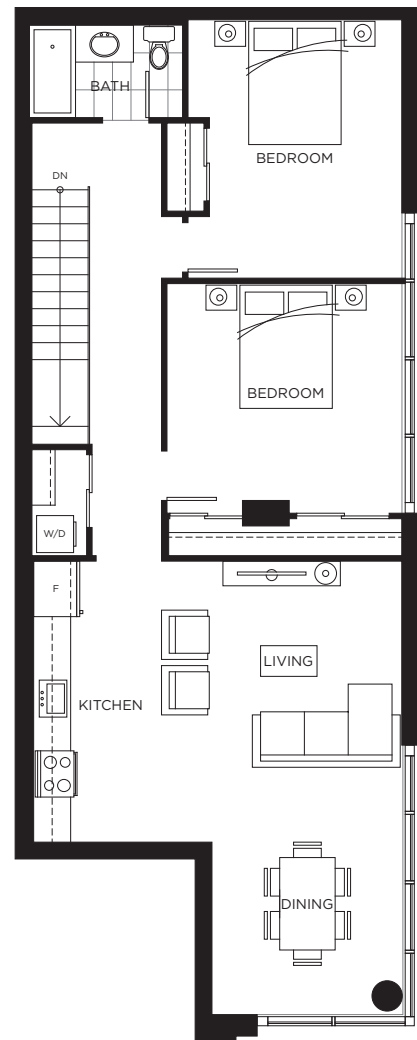
LW-A

2 BEDROOM, 1 BATH
 LOWER 1,086 SQ. FT.
 UPPER 1,082 SQ. FT.
 TOTAL 2,168 SQ. FT.

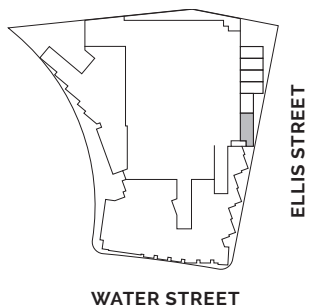
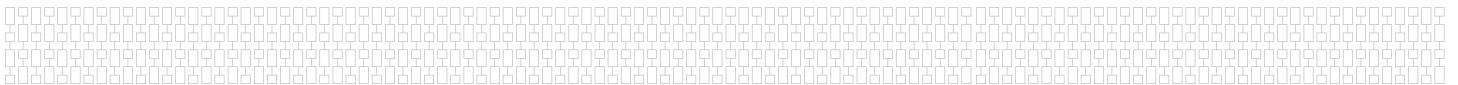
ONE
 WATER
 STREET



LOWER



UPPER

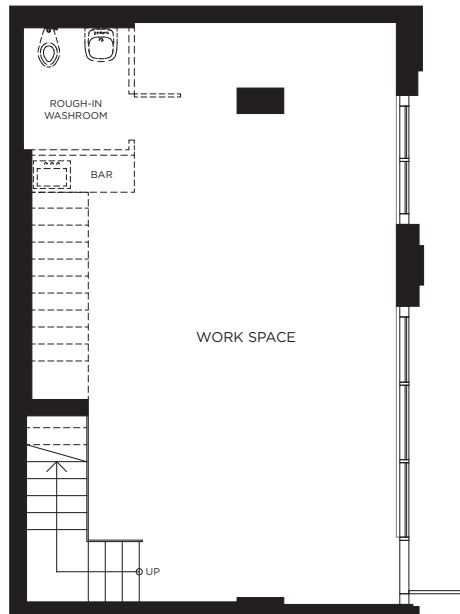


In our continuing effort to improve and maintain the high standard of One Water Street development, the developer reserves the right to modify or change plans, specifications, features and prices without notice. Materials may be substituted with equivalent or better at the developer's sole discretion. All dimensions and sizes are approximate and are based on architectural measurements. As reverse, mirrored and/or flipped plans occur throughout the development please see architectural plans if material to your decision to purchase. Renderings are an artist's conception and are intended as a general reference only. Please see disclosure statement for specific offering details. E.&O.E.

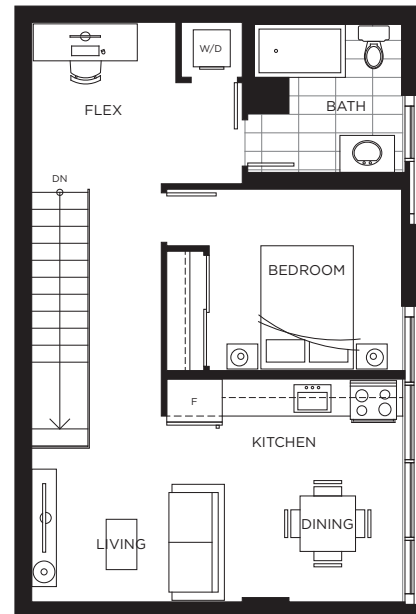
LW-B

1 BEDROOM + FLEX, 1 BATH
 LOWER 699 SQ. FT.
 UPPER 698 SQ. FT.
 TOTAL 1,396 SQ. FT.

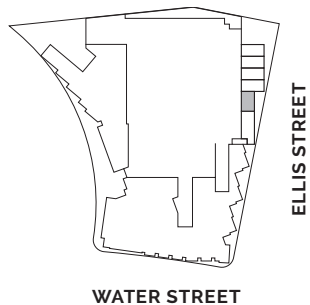
ONE
 WATER
 STREET



LOWER



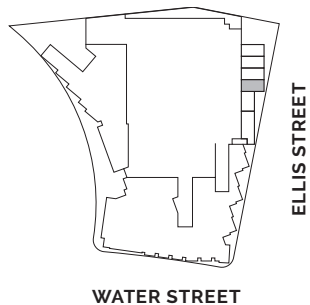
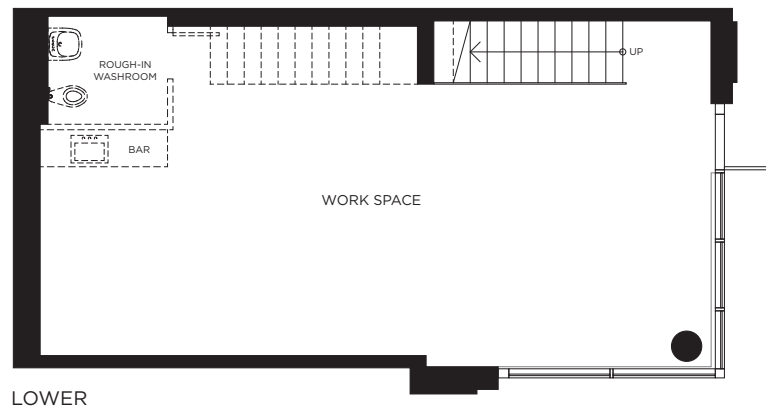
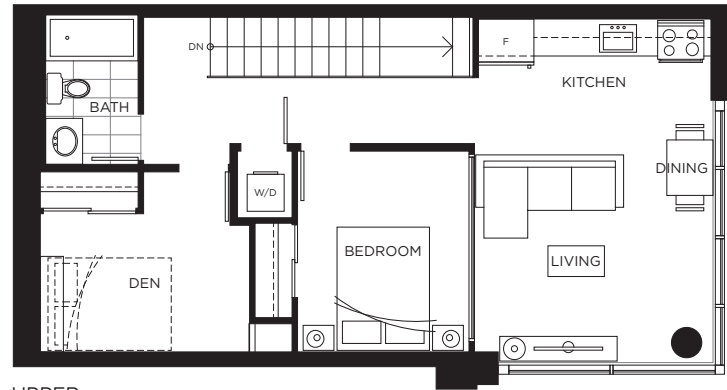
UPPER



LW-C

1 BEDROOM + DEN, 1 BATH
 LOWER 745 SQ. FT.
 UPPER 749 SQ. FT.
 TOTAL 1,494 SQ. FT.

ONE
 WATER
 STREET



In our continuing effort to improve and maintain the high standard of One Water Street development, the developer reserves the right to modify or change plans, specifications, features and prices without notice. Materials may be substituted with equivalent or better at the developer's sole discretion. All dimensions and sizes are approximate and are based on architectural measurements. As reverse, mirrored and/or flipped plans occur throughout the development please see architectural plans if material to your decision to purchase. Renderings are an artist's conception and are intended as a general reference only. Please see disclosure statement for specific offering details. E.&O.E.

LW-D

1 BEDROOM + DEN, 1 BATH

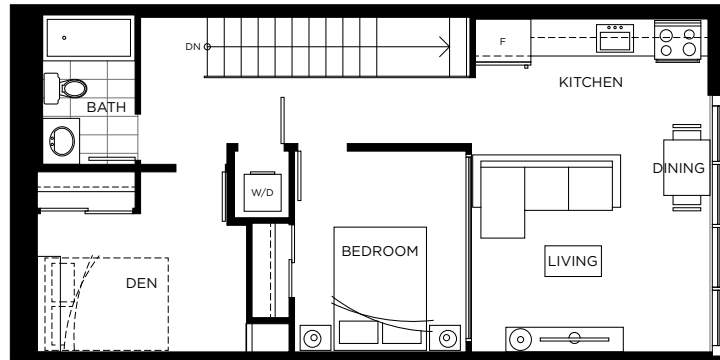
LOWER 723 SQ. FT.

UPPER 729 SQ. FT.

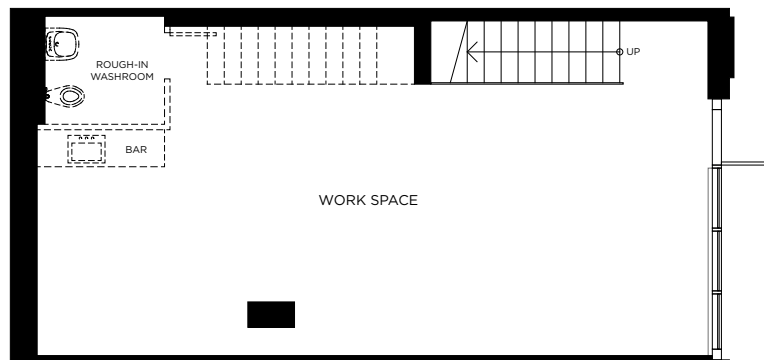
TOTAL 1,452 SQ. FT.

ONE

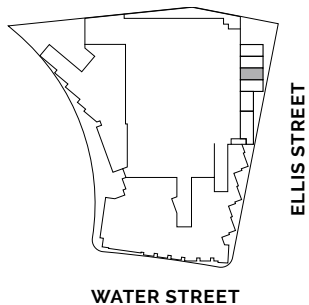
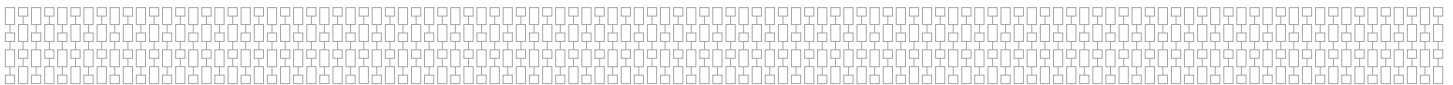
WATER
STREET



UPPER



LOWER



WATER STREET

ELLIS STREET



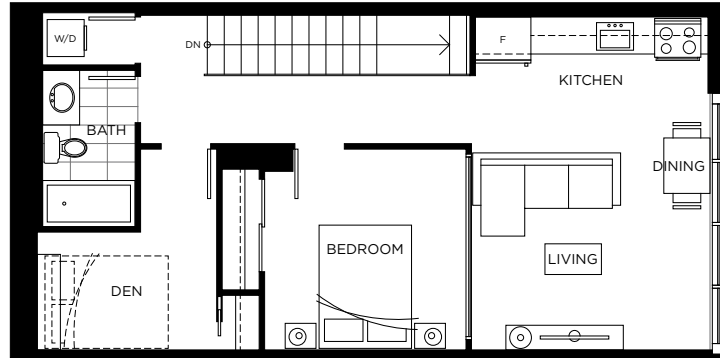
In our continuing effort to improve and maintain the high standard of One Water Street development, the developer reserves the right to modify or change plans, specifications, features and prices without notice. Materials may be substituted with equivalent or better at the developer's sole discretion. All dimensions and sizes are approximate and are based on architectural measurements. As reverse, mirrored and/or flipped plans occur throughout the development please see architectural plans if material to your decision to purchase. Renderings are an artist's conception and are intended as a general reference only. Please see disclosure statement for specific offering details. E&O.E.

LW-E

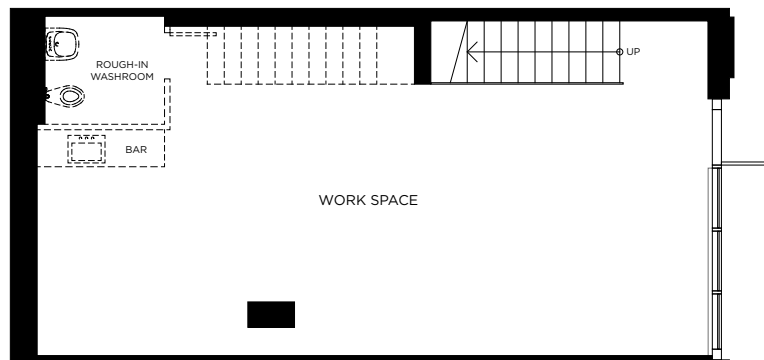
1 BEDROOM + DEN, 1 BATH
 LOWER 723 SQ. FT.
 UPPER 727 SQ. FT.

 TOTAL 1,450 SQ. FT.

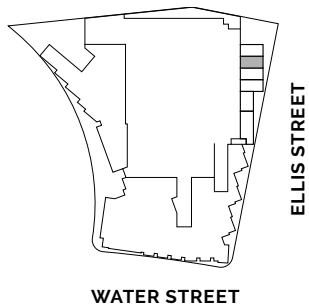
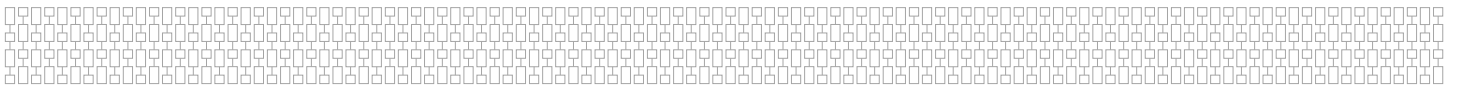
ONE
 WATER
 STREET



UPPER



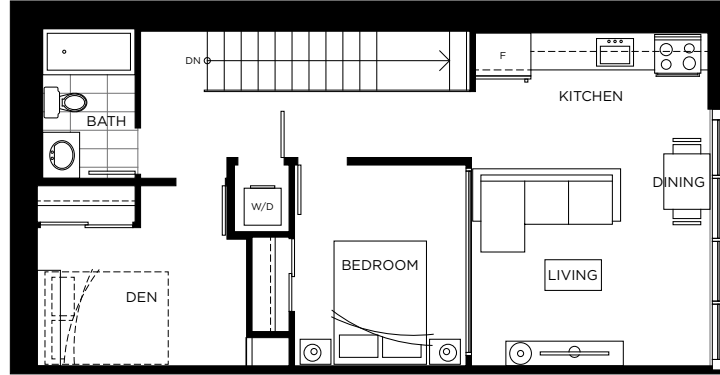
LOWER



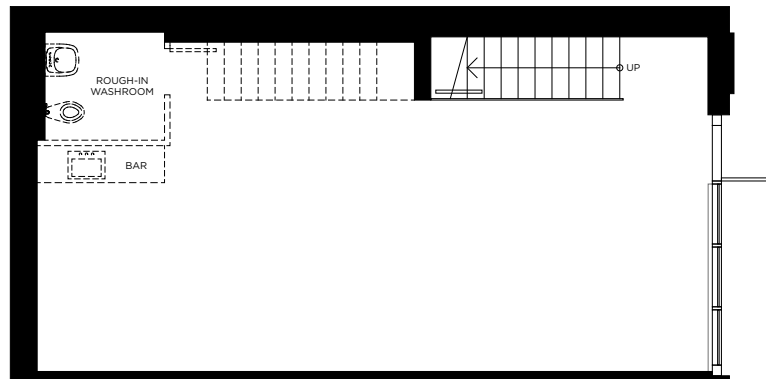
LW-F

1 BEDROOM + DEN, 1 BATH
 LOWER 719 SQ. FT.
 UPPER 724 SQ. FT.
 TOTAL 1,443 SQ. FT.

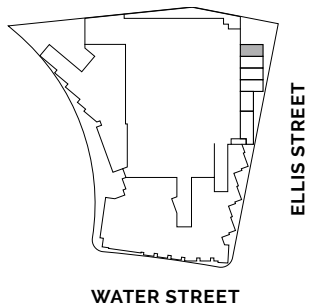
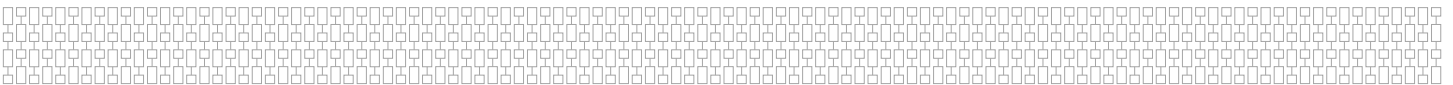
ONE
 WATER
 STREET



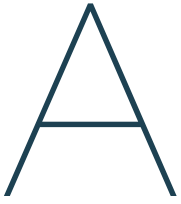
UPPER



LOWER



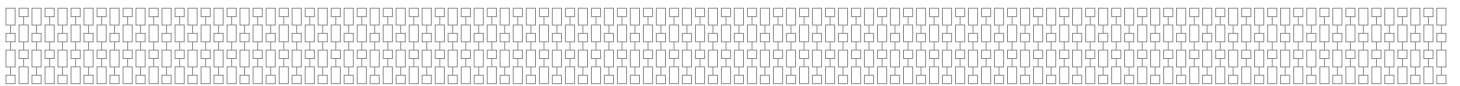
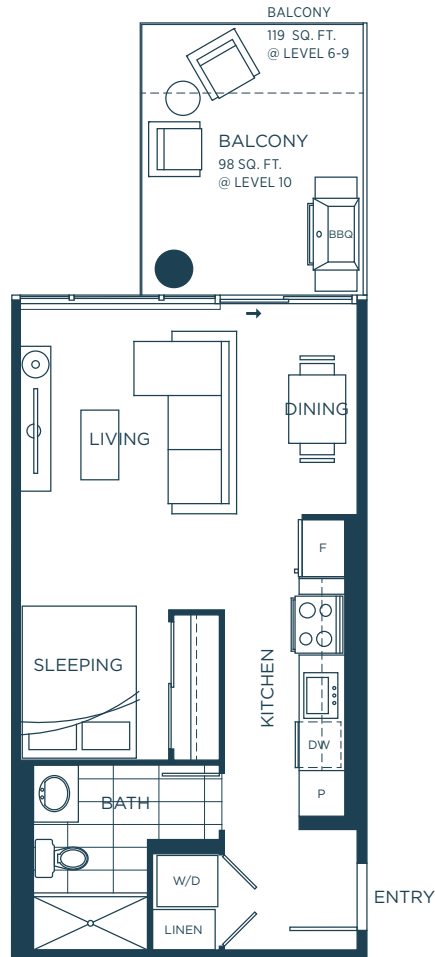
In our continuing effort to improve and maintain the high standard of One Water Street development, the developer reserves the right to modify or change plans, specifications, features and prices without notice. Materials may be substituted with equivalent or better at the developer's sole discretion. All dimensions and sizes are approximate and are based on architectural measurements. As reverse, mirrored and/or flipped plans occur throughout the development please see architectural plans if material to your decision to purchase. Renderings are an artist's conception and are intended as a general reference only. Please see disclosure statement for specific offering details. E.&O.E.



STUDIO
INTERIOR 434 SQ. FT.
EXTERIOR 98-119 SQ. FT.
TOTAL 532-553 SQ. FT.

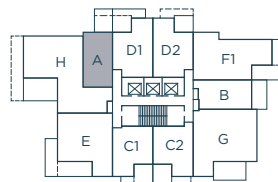
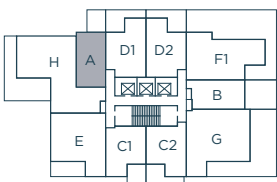
ONE

WATER
STREET



LEVEL 6

LEVELS 7-10

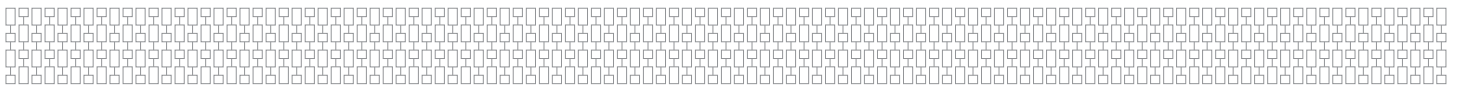
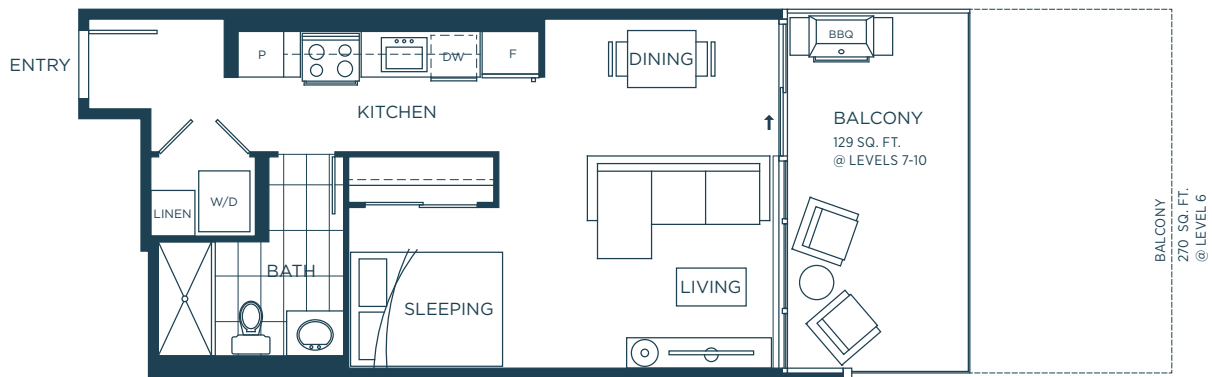


B

STUDIO
 INTERIOR 448 SQ. FT.
 EXTERIOR 129-270 SQ. FT.
 TOTAL 577-718 SQ. FT.

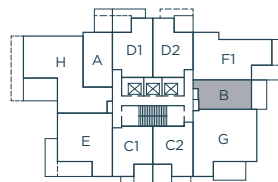
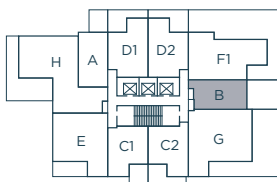
ONE

WATER
 STREET



LEVEL 6

LEVELS 7-10

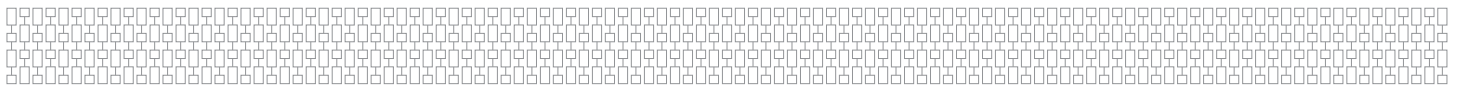
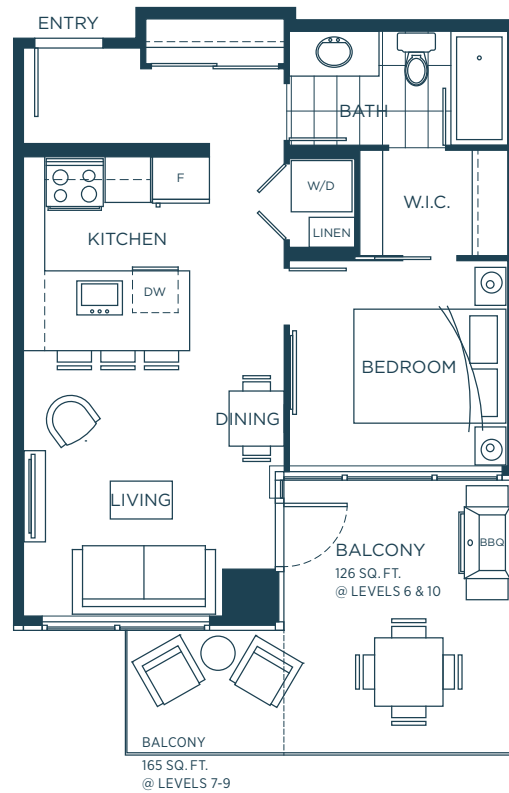


In our continuing effort to improve and maintain the high standard of One Water Street development, the developer reserves the right to modify or change plans, specifications, features and prices without notice. Materials may be substituted with equivalent or better at the developer's sole discretion. All dimensions and sizes are approximate and are based on architectural measurements. As reverse, mirrored and/or flipped plans occur throughout the development please see architectural plans if material to your decision to purchase. Renderings are an artist's conception and are intended as a general reference only. Please see disclosure statement for specific offering details. E.&O.E.

C1

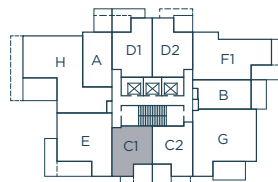
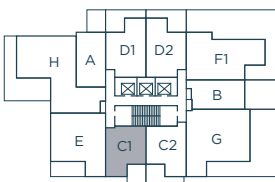
1 BEDROOM, 1 BATH
 INTERIOR 512 SQ. FT.
 EXTERIOR 126-165 SQ. FT.
 TOTAL 638-677 SQ. FT.

ONE
 WATER
 STREET



LEVEL 6

LEVELS 7-10

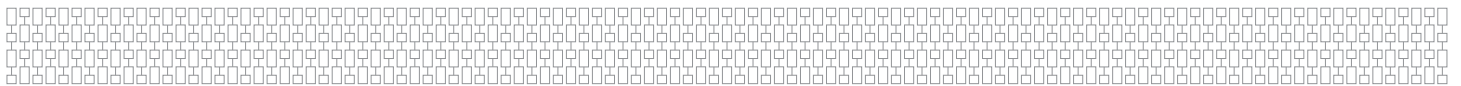
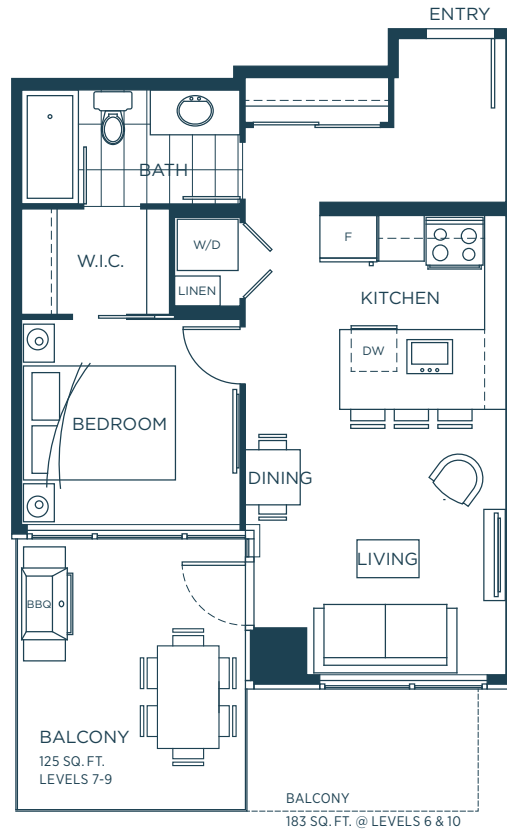


In our continuing effort to improve and maintain the high standard of One Water Street development, the developer reserves the right to modify or change plans, specifications, features and prices without notice. Materials may be substituted with equivalent or better at the developer's sole discretion. All dimensions and sizes are approximate and are based on architectural measurements. As reverse, mirrored and/or flipped plans occur throughout the development please see architectural plans if material to your decision to purchase. Renderings are an artist's conception and are intended as a general reference only. Please see disclosure statement for specific offering details. E.&O.E.

C2

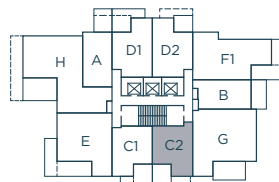
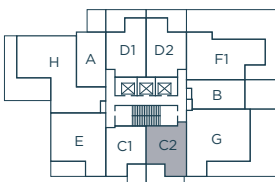
1 BEDROOM, 1 BATH
 INTERIOR 530 SQ. FT.
 EXTERIOR 125-183 SQ. FT.
 TOTAL 655-713 SQ. FT.

ONE
 WATER
 STREET



LEVEL 6

LEVELS 7-10

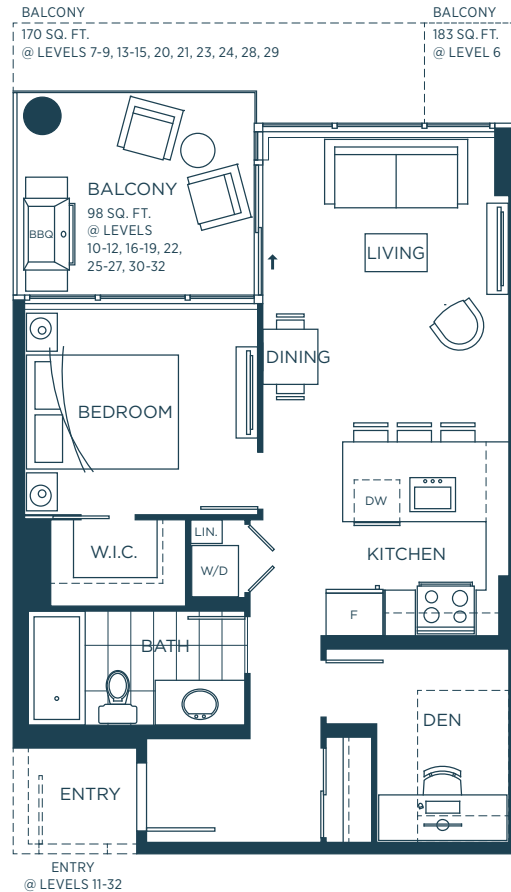


In our continuing effort to improve and maintain the high standard of One Water Street development, the developer reserves the right to modify or change plans, specifications, features and prices without notice. Materials may be substituted with equivalent or better at the developer's sole discretion. All dimensions and sizes are approximate and are based on architectural measurements. As reverse, mirrored and/or flipped plans occur throughout the development please see architectural plans if material to your decision to purchase. Renderings are an artist's conception and are intended as a general reference only. Please see disclosure statement for specific offering details. E.&O.E.

D1

1 BEDROOM + DEN, 1 BATH
 INTERIOR 587-610 SQ. FT.
 EXTERIOR 98-183 SQ. FT.
 TOTAL 685-780 SQ. FT.

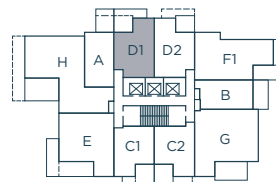
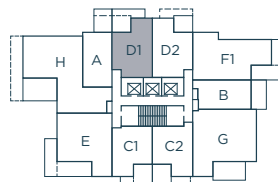
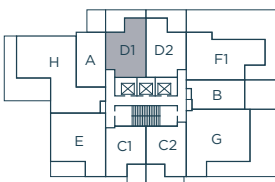
ONE
 WATER
 STREET



LEVEL 6

LEVELS 7-10

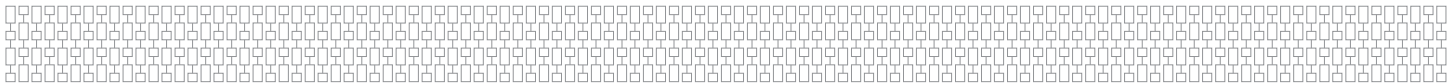
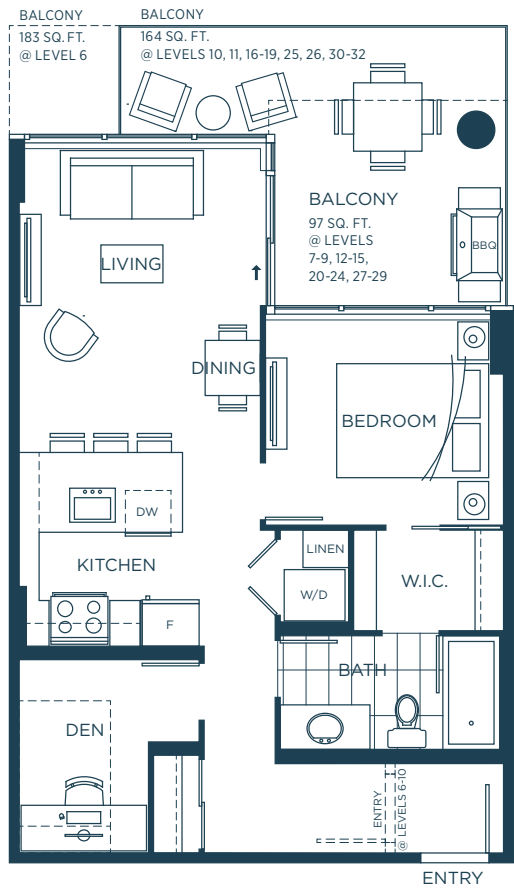
LEVELS 11-32



D2

1 BEDROOM + DEN, 1 BATH
 INTERIOR 588-610 SQ. FT.
 EXTERIOR 97-183 SQ. FT.
 TOTAL 685-774 SQ. FT.

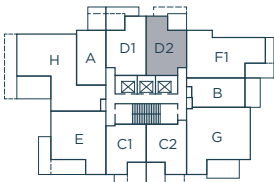
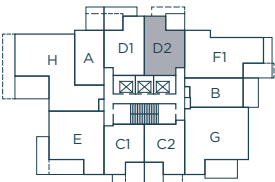
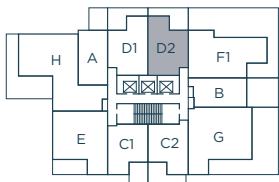
ONE
 WATER
 STREET



LEVEL 6

LEVELS 7-10

LEVELS 11-32



In our continuing effort to improve and maintain the high standard of One Water Street development, the developer reserves the right to modify or change plans, specifications, features and prices without notice. Materials may be substituted with equivalent or better at the developer's sole discretion. All dimensions and sizes are approximate and are based on architectural measurements. As reverse, mirrored and/or flipped plans occur throughout the development please see architectural plans if material to your decision to purchase. Renderings are an artist's conception and are intended as a general reference only. Please see disclosure statement for specific offering details. E.&O.E.

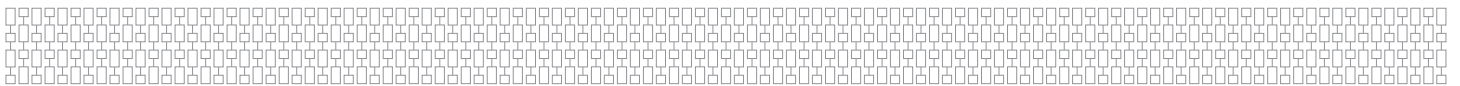
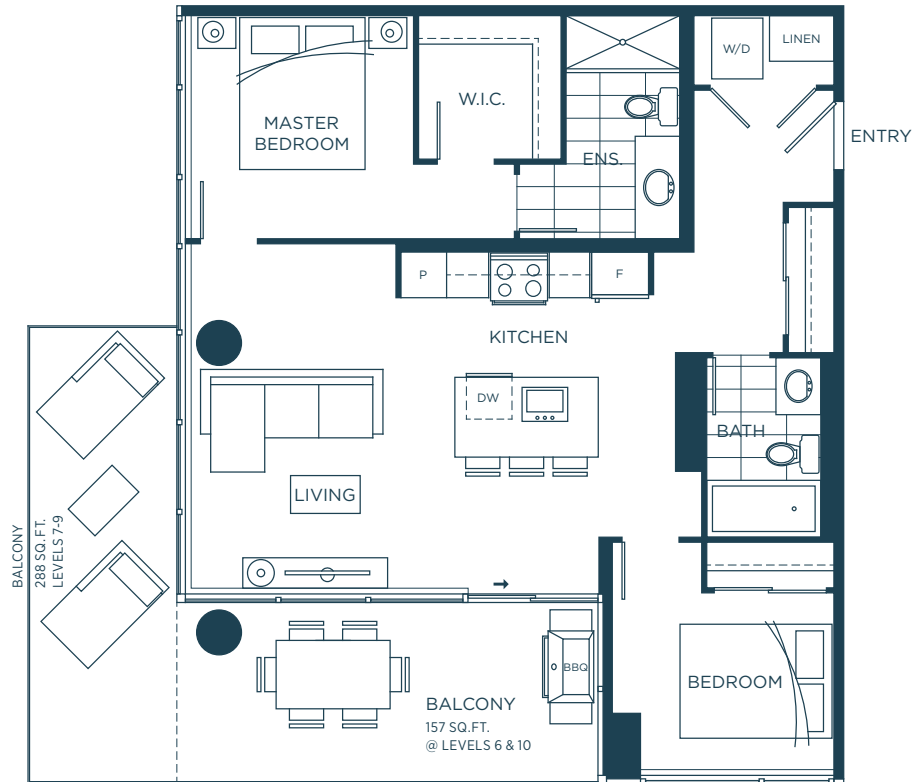


2 BEDROOM, 2 BATH
INTERIOR 818 SQ. FT.
EXTERIOR 157-288 SQ. FT.

TOTAL 975-1,106 SQ. FT.

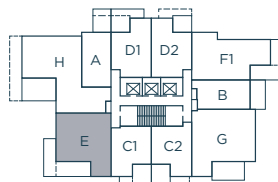
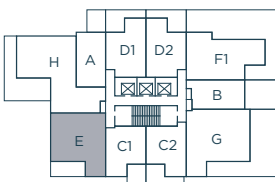
ONE

WATER
STREET



LEVEL 6

LEVELS 7-10

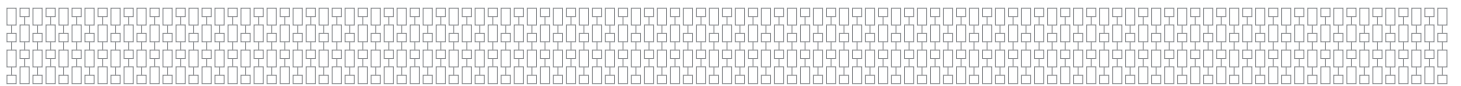
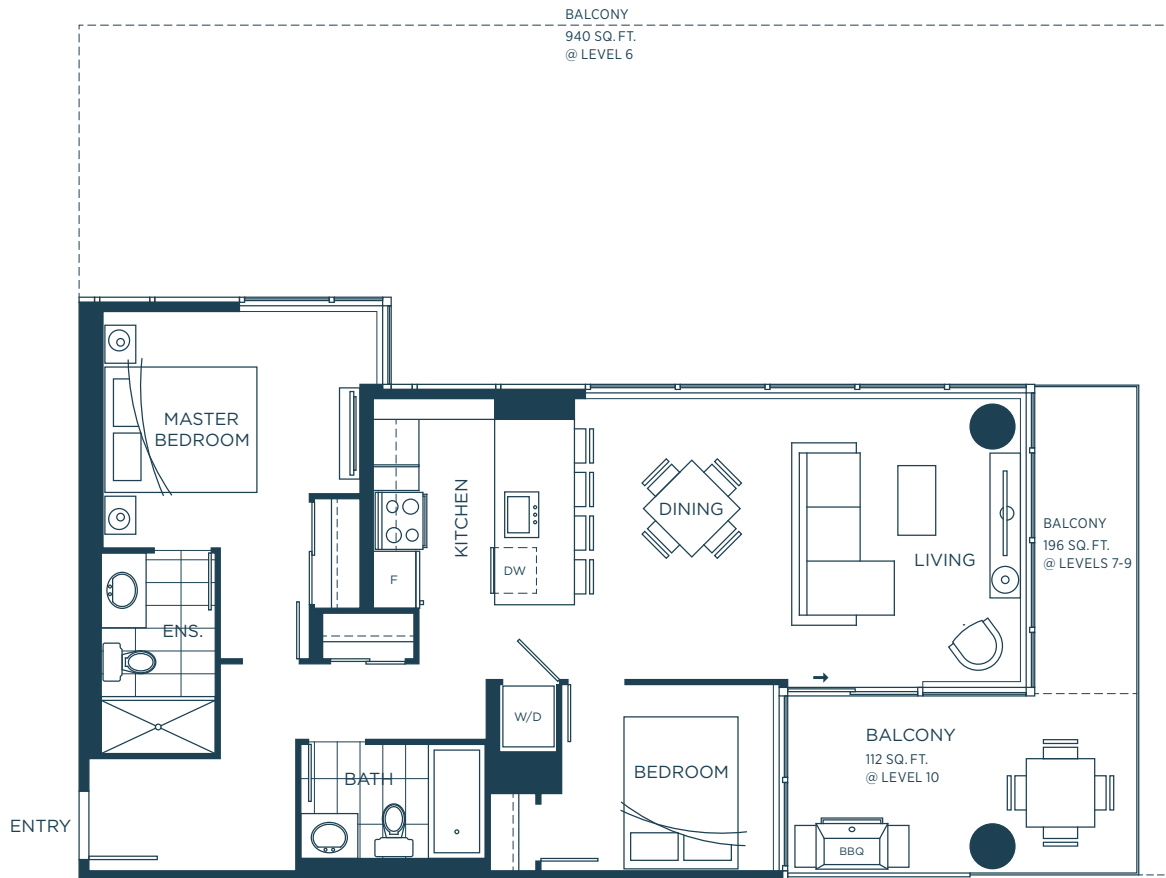


In our continuing effort to improve and maintain the high standard of One Water Street development, the developer reserves the right to modify or change plans, specifications, features and prices without notice. Materials may be substituted with equivalent or better at the developer's sole discretion. All dimensions and sizes are approximate and are based on architectural measurements. As reverse, mirrored and/or flipped plans occur throughout the development please see architectural plans if material to your decision to purchase. Renderings are an artist's conception and are intended as a general reference only. Please see disclosure statement for specific offering details. E.&O.E.

F1

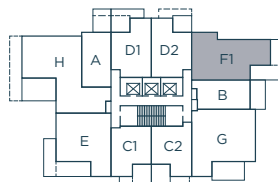
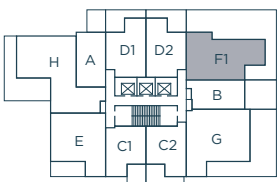
2 BEDROOM, 2 BATH
 INTERIOR 840 SQ. FT.
 EXTERIOR 112-940 SQ. FT.
 TOTAL 952-1,780 SQ. FT.

ONE
 WATER
 STREET



LEVEL 6

LEVELS 7-10

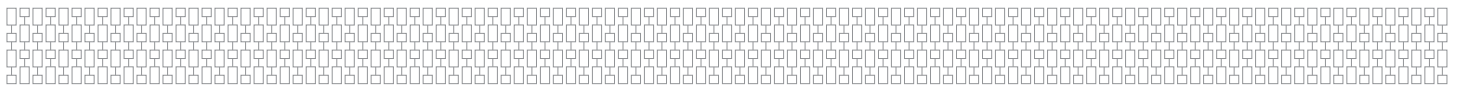
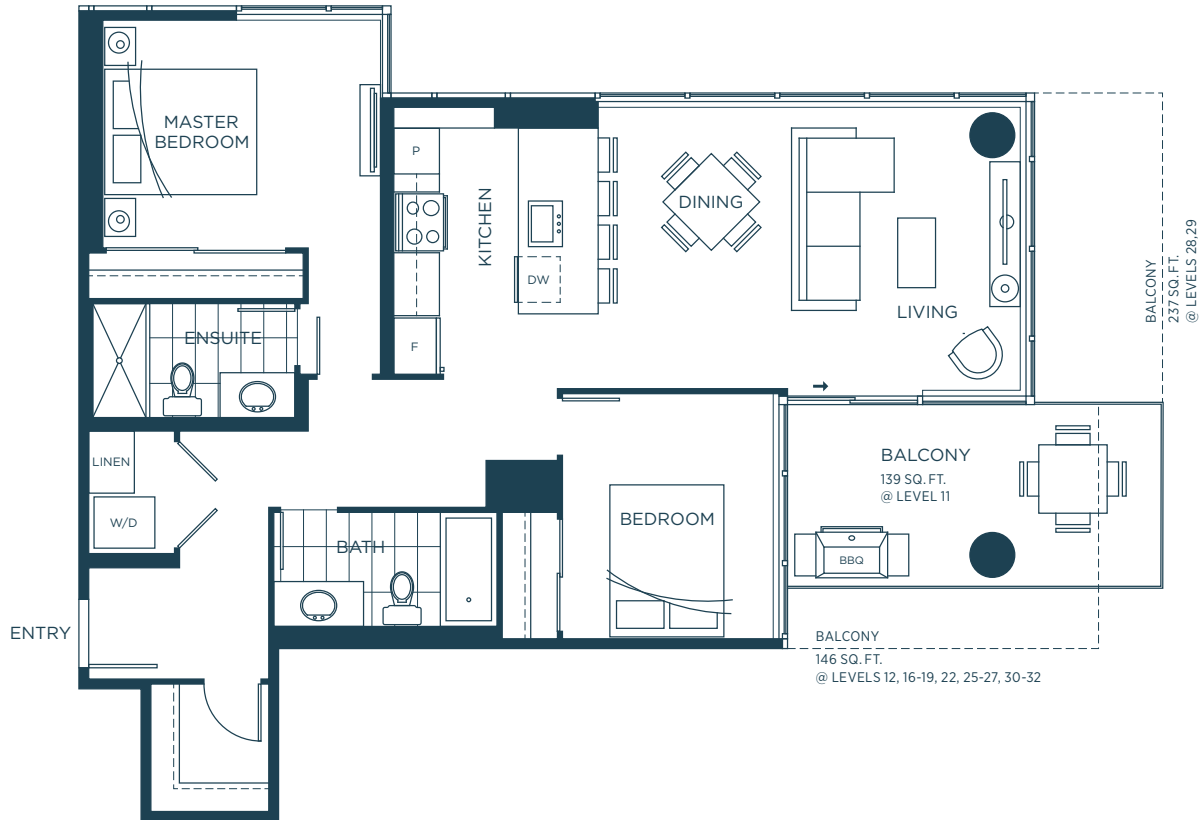


F2

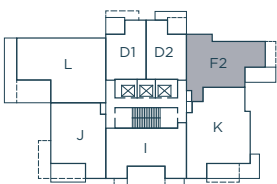
2 BEDROOM, 2 BATH
 INTERIOR 966 SQ. FT.
 EXTERIOR 139-237 SQ. FT.
 TOTAL 1,105-1,203 SQ. FT.

ONE

WATER
 STREET



LEVELS 11-32

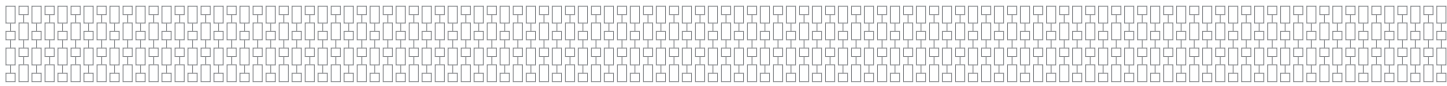
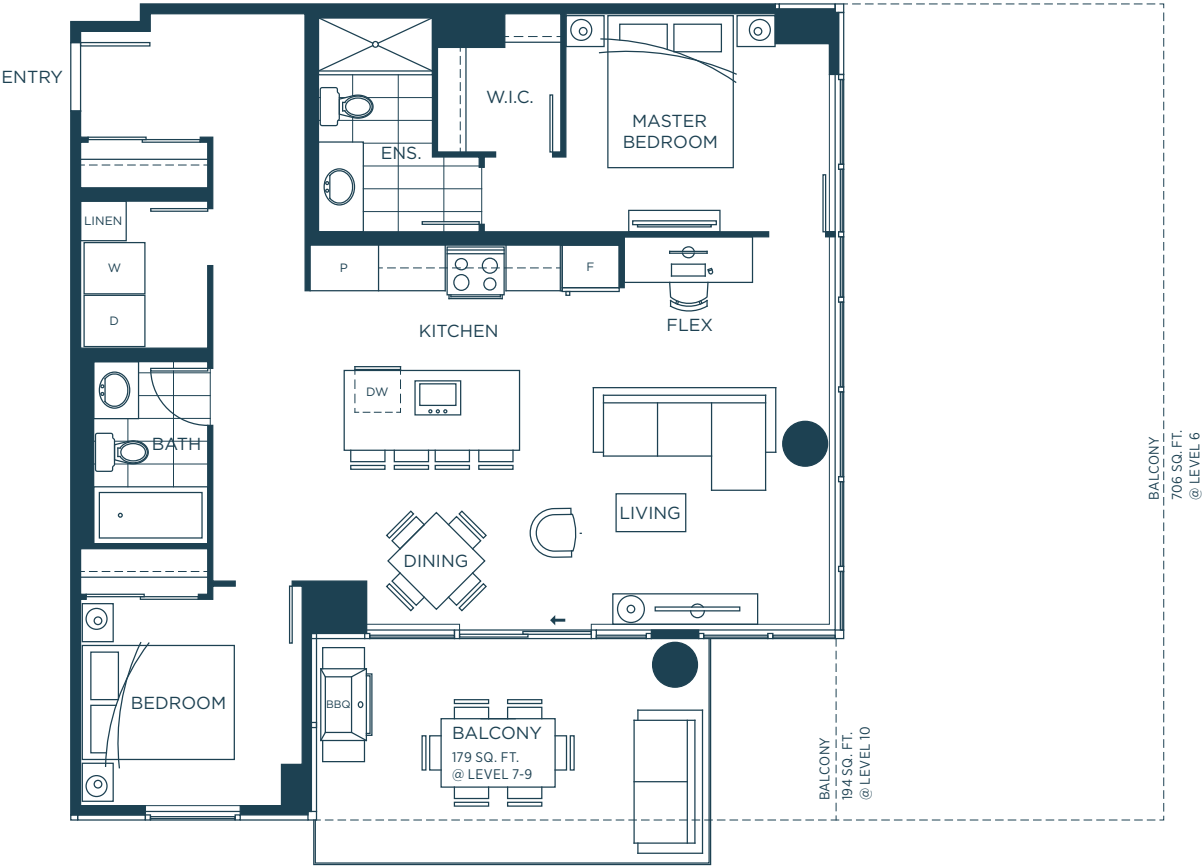


In our continuing effort to improve and maintain the high standard of One Water Street development, the developer reserves the right to modify or change plans, specifications, features and prices without notice. Materials may be substituted with equivalent or better at the developer's sole discretion. All dimensions and sizes are approximate and are based on architectural measurements. As reverse, mirrored and/or flipped plans occur throughout the development please see architectural plans if material to your decision to purchase. Renderings are an artist's conception and are intended as a general reference only. Please see disclosure statement for specific offering details. E.&O.E.

G

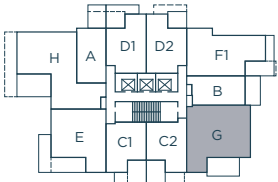
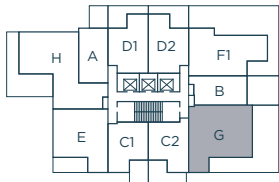
2 BEDROOM + FLEX, 2 BATH
 INTERIOR 990 SQ. FT.
 EXTERIOR 179-706 SQ. FT.
 TOTAL 1,169-1,696 SQ. FT.

ONE
 WATER
 STREET



LEVEL 6

LEVELS 7-10

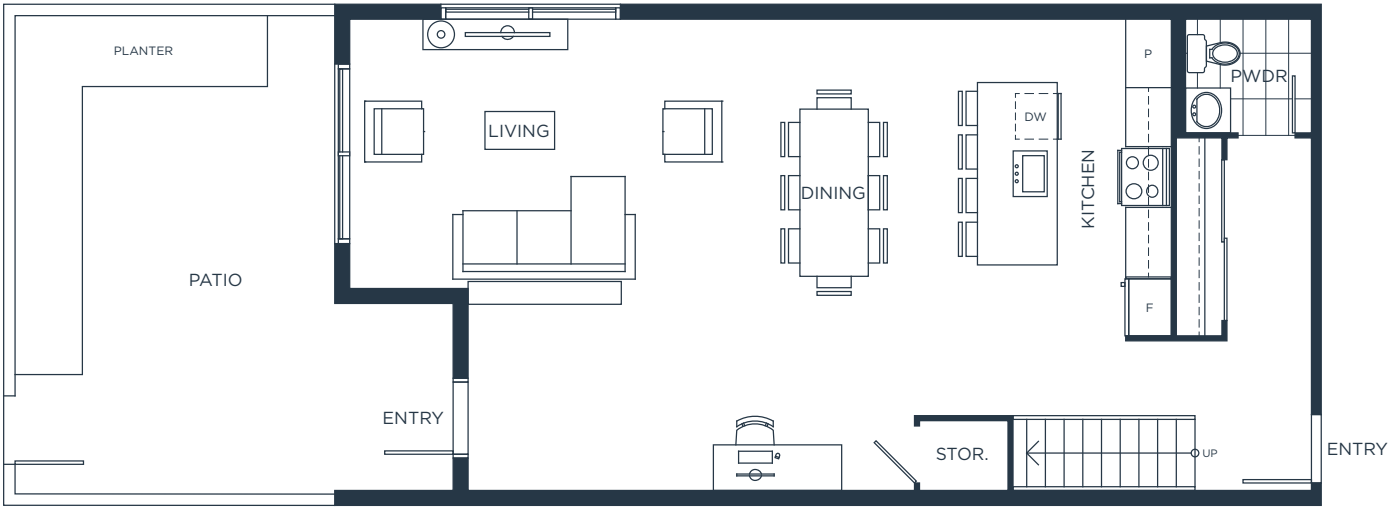


In our continuing effort to improve and maintain the high standard of One Water Street development, the developer reserves the right to modify or change plans, specifications, features and prices without notice. Materials may be substituted with equivalent or better at the developer's sole discretion. All dimensions and sizes are approximate and are based on architectural measurements. As reverse, mirrored and/or flipped plans occur throughout the development please see architectural plans if material to your decision to purchase. Renderings are an artist's conception and are intended as a general reference only. Please see disclosure statement for specific offering details. E&O.E.

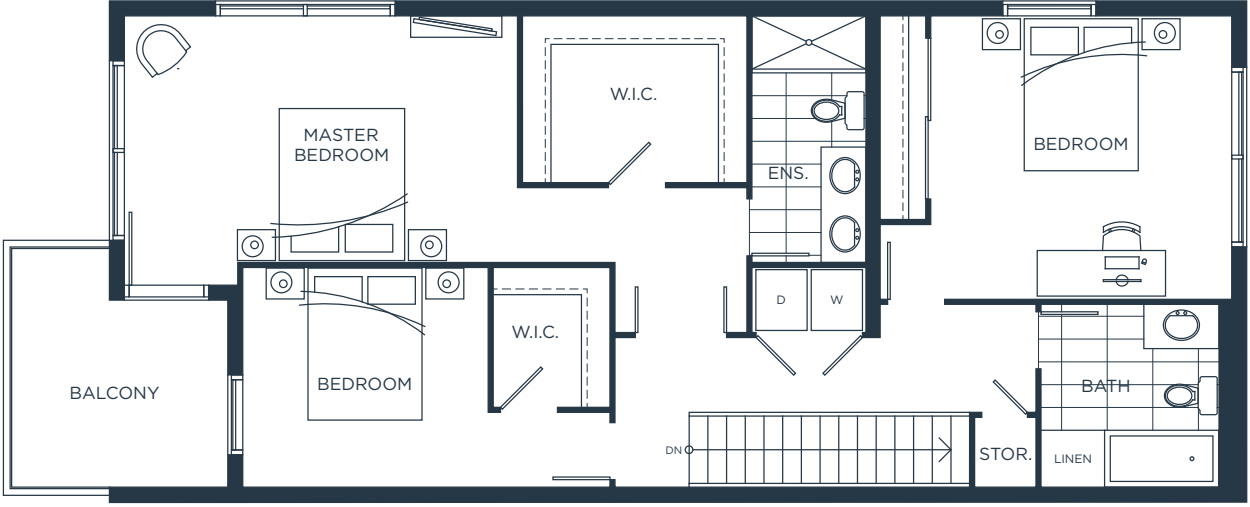
TH3

TOWNHOME 3
3 BEDROOM, 2.5 BATH
LOWER 888 SQ. FT. UPPER 1,036 SQ. FT.
EXTERIOR 456 SQ. FT.
TOTAL 2,380 SQ. FT.

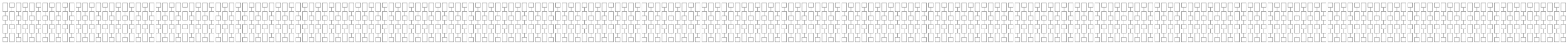
ONE
WATER
STREET



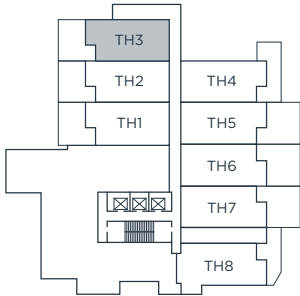
LOWER



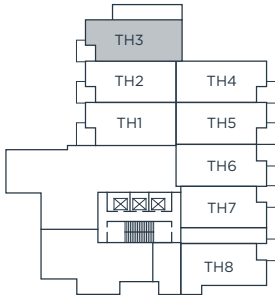
UPPER



LEVEL 4



LEVEL 5



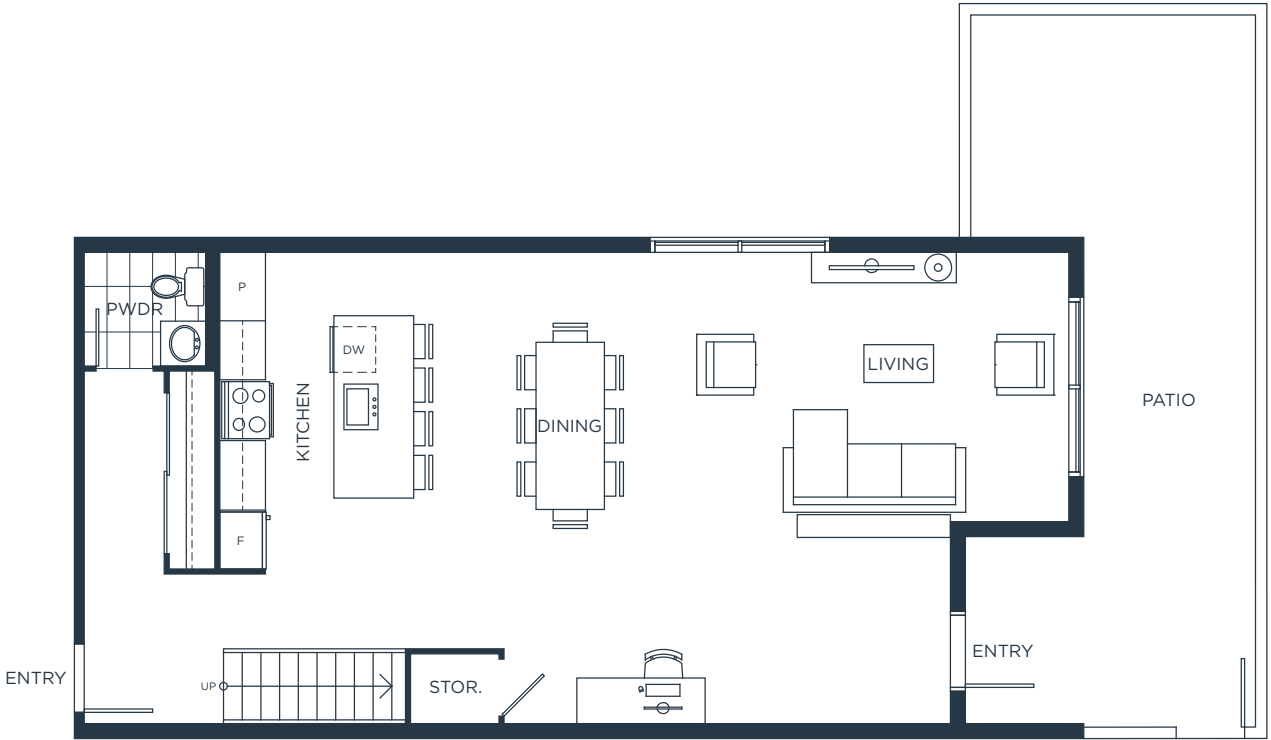
In our continuing effort to improve and maintain the high standard of One Water Street development, the developer reserves the right to modify or change plans, specifications, features and prices without notice. Materials may be substituted with equivalent or better at the developer's sole discretion. All dimensions and sizes are approximate and are based on architectural measurements. As reverse, mirrored and/or flipped plans occur throughout the development please see architectural plans if material to your decision to purchase. Renderings are an artist's conception and are intended as a general reference only. This is not an offering for sale which can only be made with a disclosure statement. E.&O.E.

TH4

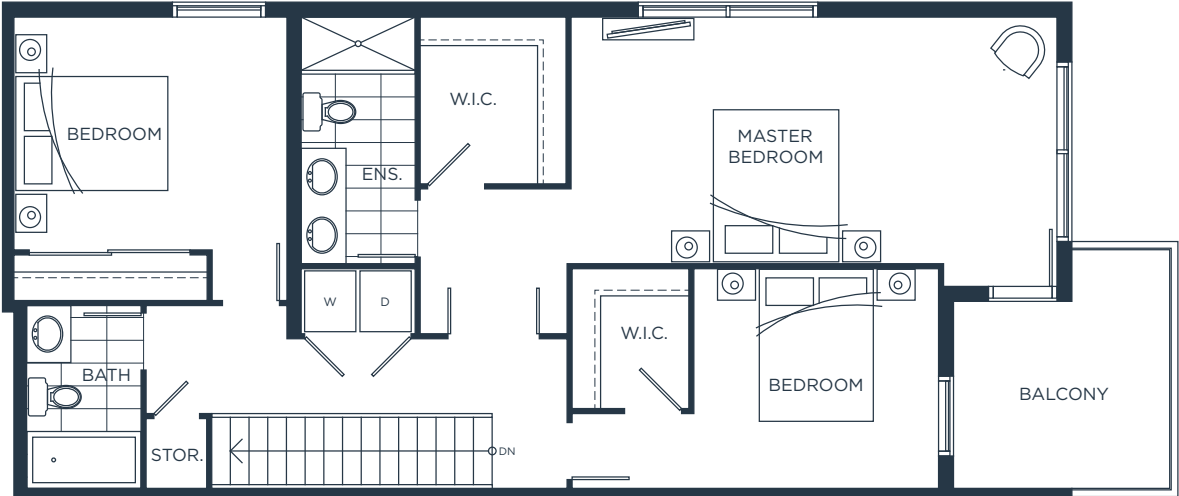
TOWNHOME 4
3 BEDROOM, 2.5 BATH
LOWER 918 SQ. FT. UPPER 967 SQ. FT.
EXTERIOR 451 SQ. FT.

TOTAL 2,336 SQ. FT.

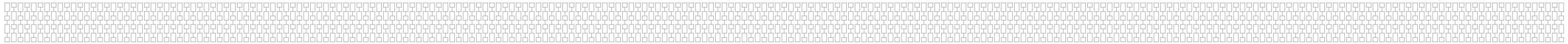
ONE
WATER
STREET



LOWER

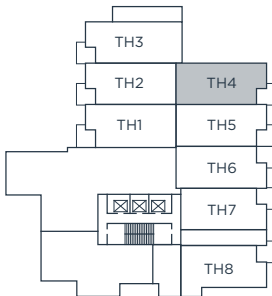
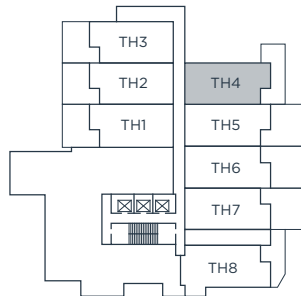


UPPER



LEVEL 4

LEVEL 5

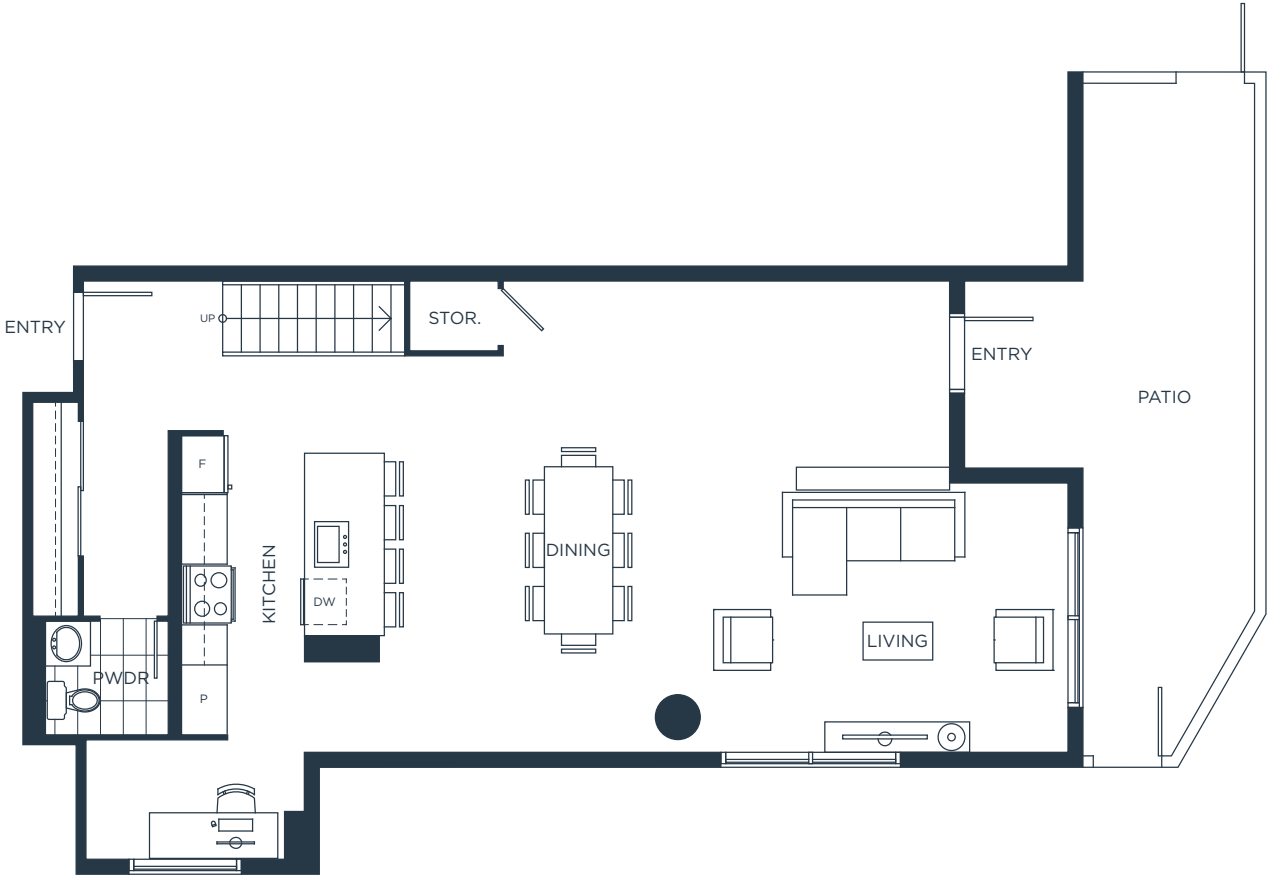


In our continuing effort to improve and maintain the high standard of One Water Street development, the developer reserves the right to modify or change plans, specifications, features and prices without notice. Materials may be substituted with equivalent or better at the developer's sole discretion. All dimensions and sizes are approximate and are based on architectural measurements. As reverse, mirrored and/or flipped plans occur throughout the development please see architectural plans if material to your decision to purchase. Renderings are an artist's conception and are intended as a general reference only. This is not an offering for sale which can only be made with a disclosure statement. E.&O.E.

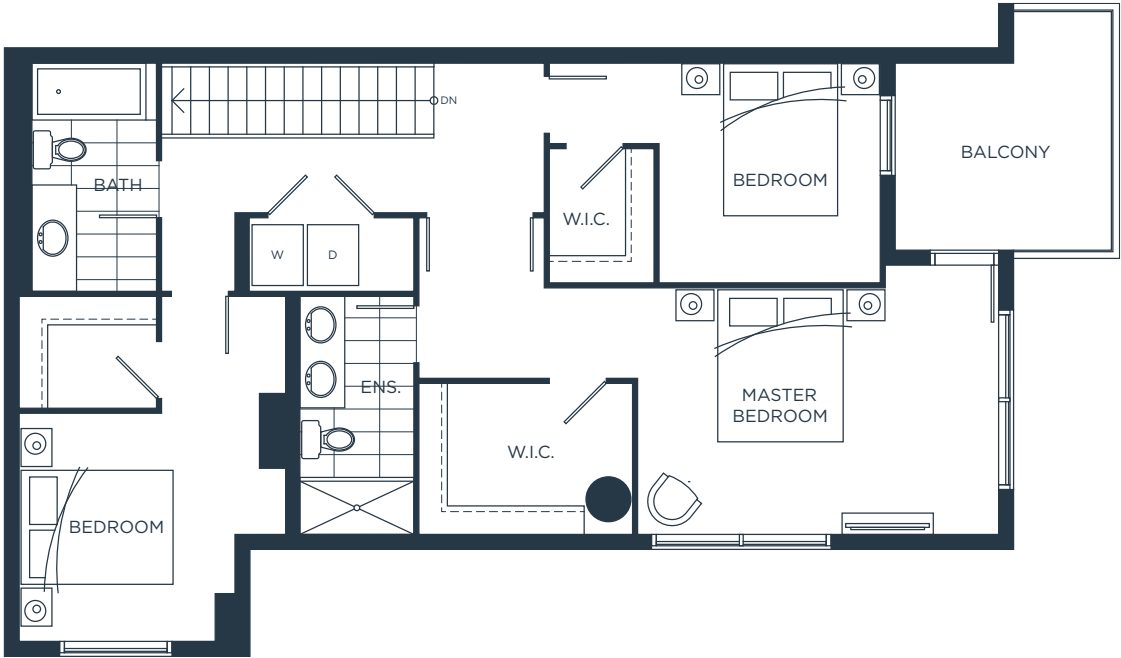
TH8

TOWNHOME 8
3 BEDROOM, 2.5 BATH
LOWER 999 SQ. FT. UPPER 956 SQ. FT.
EXTERIOR 368 SQ. FT.
TOTAL 2,323 SQ. FT.

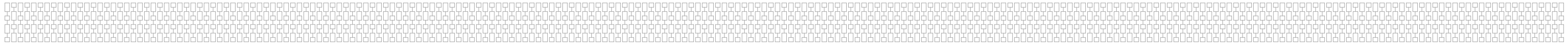
ONE
WATER
STREET



LOWER

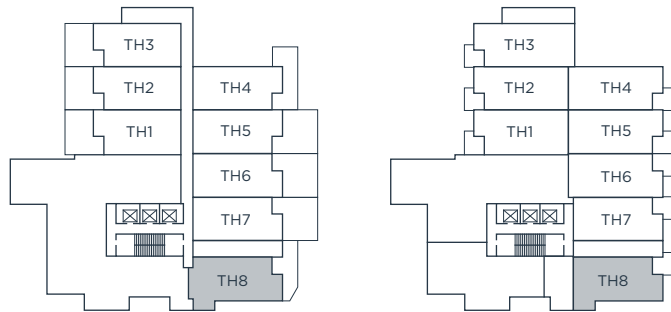


UPPER



LEVEL 4

LEVEL 5



In our continuing effort to improve and maintain the high standard of One Water Street development, the developer reserves the right to modify or change plans, specifications, features and prices without notice. Materials may be substituted with equivalent or better at the developer's sole discretion. All dimensions and sizes are approximate and are based on architectural measurements. As reverse, mirrored and/or flipped plans occur throughout the development please see architectural plans if material to your decision to purchase. Renderings are an artist's conception and are intended as a general reference only. This is not an offering for sale which can only be made with a disclosure statement. E.&O.E.